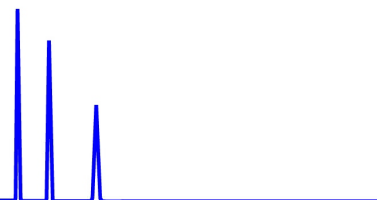




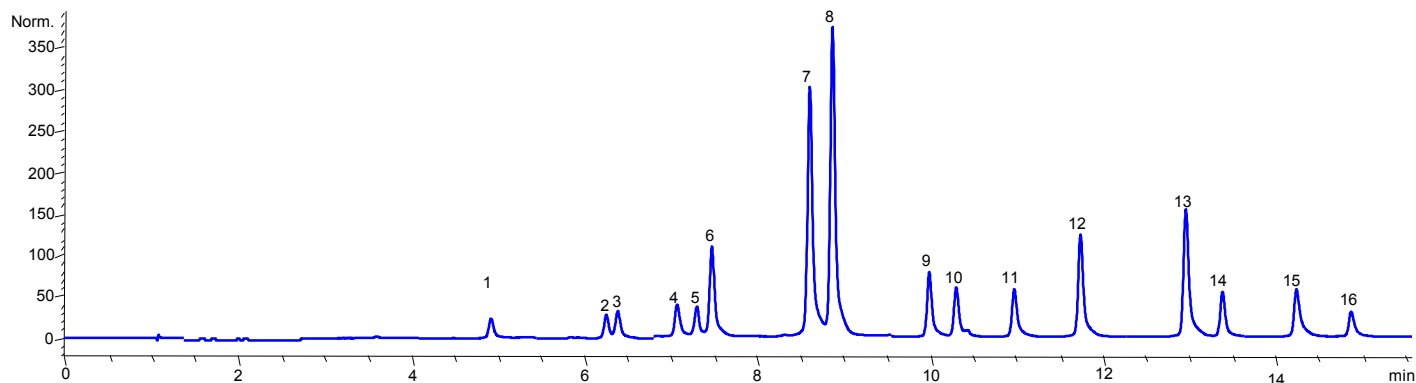
ZirChrom®

# Technical Bulletin #121



... For Peak Performance

## 16 Poly Aromatic Hydrocarbons on ZirChrom®-PS



Column: ZirChrom®-PS 150 × 4.6 mm

Mobile Phase: Gradient

Detection: 254 nm

Injection: 5 uL

Temperature: 80C with Metalox 200-C

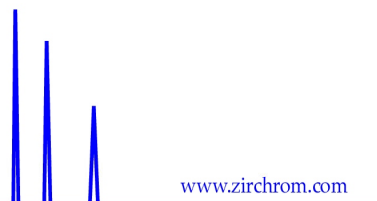
Minutes	%A	%B
0	80	20
20	20	80
21	20	80

A: Water

B: ACN

Flow rate: 1.5 ml/min.

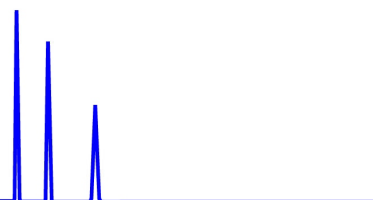
Solutes: 1=Napthalene, 2 =1-Methylnapthalene, 3 =Acenaphthylene, 4=Acenaphthene  
 5=Fluorene, 6=Decafluorobiphenyl, 7=Phenanthrene, 8=Anthracene  
 9=Fluoranthene, 10=Pyrene, 11=p-terphenyl-d14, 12=benzo(a)anthracene,  
 13=benzo(b)fluoranthene, 14=Benzo(a)pyrene, 15=Dibenzo(a,h)anthracene,  
 16=Benzo(g,h,i)perylene





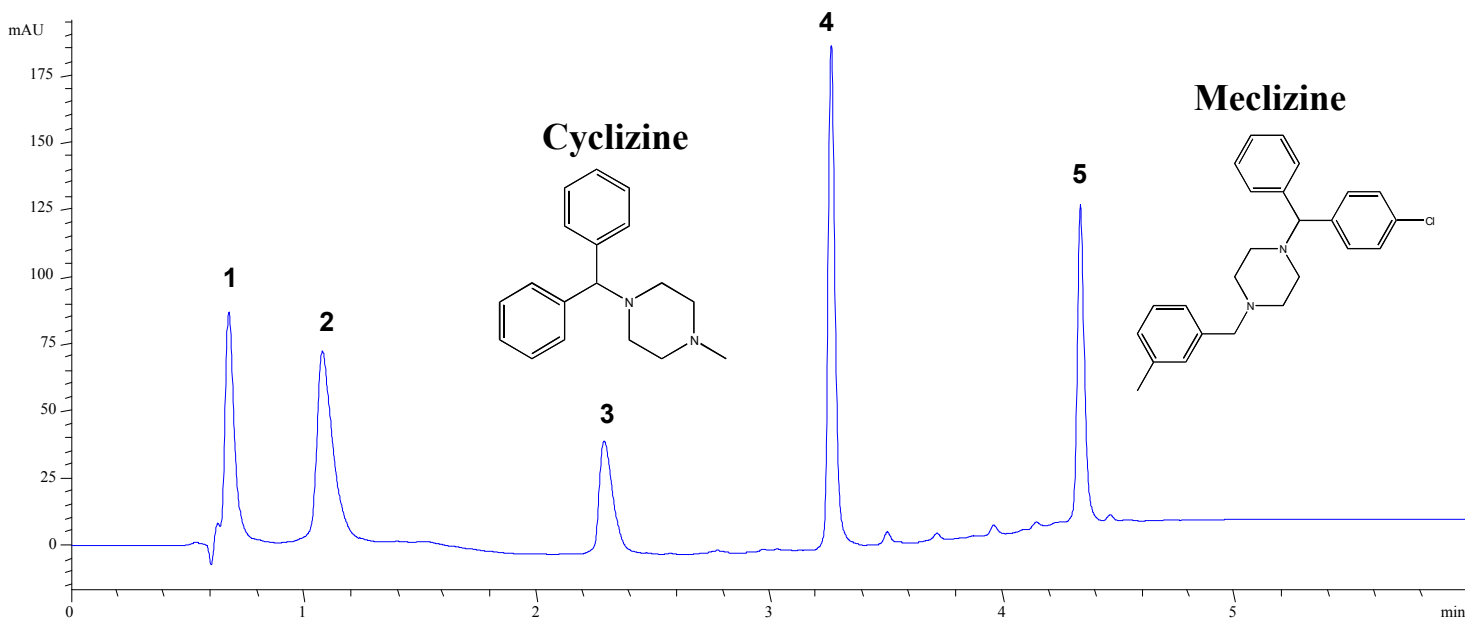
ZirChrom®

Technical  
Bulletin #263



... For Peak Performance

## Antihistamines on ZirChrom®-PS



### Analytes

1 - Tripeleennamine 2 - Triprolidine 3 - Cyclizine 4 - Pyrrobutamine 5 - Meclizine

### LC Conditions

Column: ZirChrom®-PS, 50 mm × 4.6 mm i.d.

Mobile Phase: Gradient Elution

Flow rate: 1.0 mL/min.

Temperature: 40 °C

Injection volume: 0.5 µL

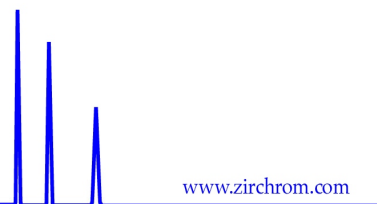
Detection: 254 nm

Back Pressure: 56 bar

Time (Minutes)	% A	%B
0	95	5
1	85	15
4	40	60

A: 25mM HCl, pH 1.9

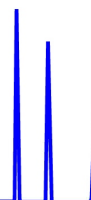
B: ACN





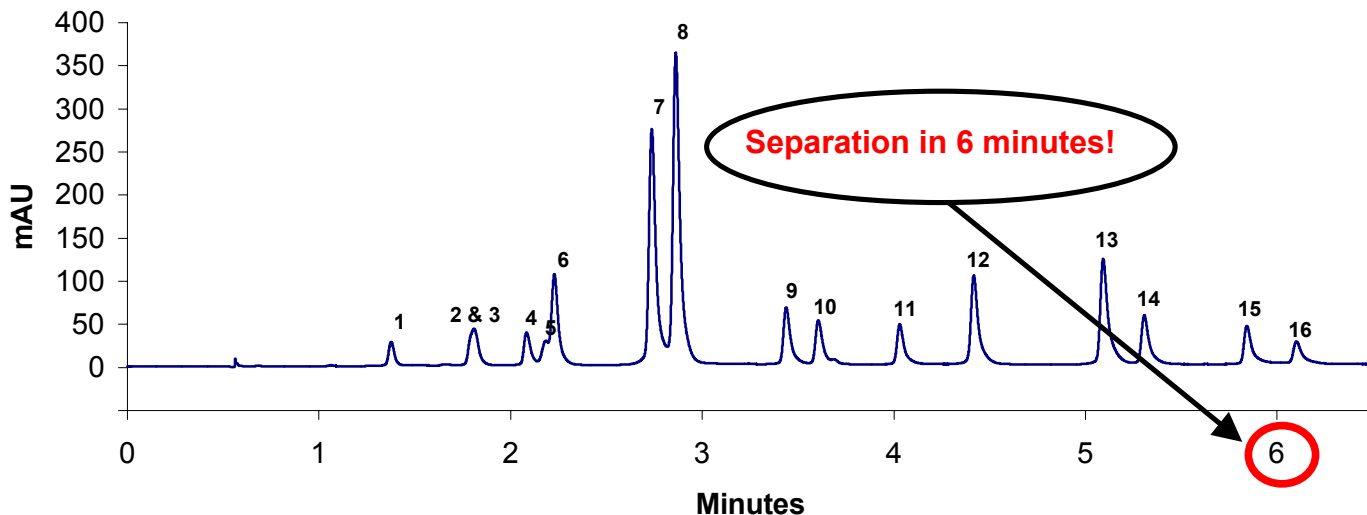
ZirChrom®

Technical  
Bulletin #271



... For Peak Performance

## 16 Poly Aromatic Hydrocarbons on ZirChrom®-PS at 125°C



Column: ZirChrom®-PS 150 × 4.6 mm  
Mobile Phase: Gradient

Detection: 254 nm  
Injection: 2 uL  
Temperature: 125°C with Metalox 200-C

Minutes	%A	%B
0	90	10
7	50	50
7.5	50	50

A: Water  
B: ACN

Flow rate: 3.0 ml/min.

Solutes: 1=Napthalene, 2 =1-Methylnapthalene, 3 =Acenaphthylene, 4=Acenaphthene  
5=Fluorene, 6=Decafluorobiphenyl, 7=Phenanthrene, 8=Anthracene  
9=Fluoranthene, 10=Pyrene, 11=p-terphenyl-d14, 12=benzo(a)anthracene,  
13=benzo(b)fluoranthene, 14=Benzo(a)pyrene, 15=Dibenzo(a,h)anthracene,  
16=Benzo(g,h,i)perylene

