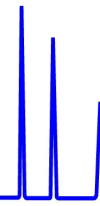




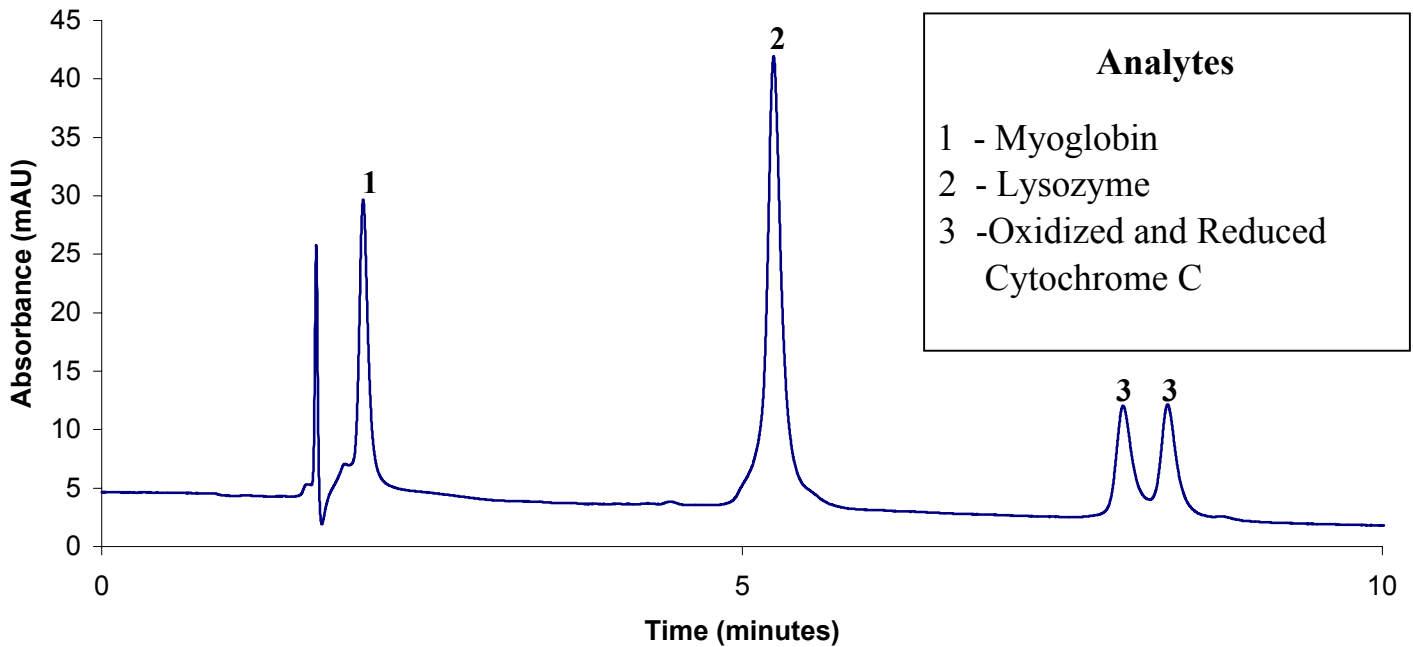
ZirChrom®

Technical  
Bulletin #139



... For Peak Performance

## Protein Separation on ZirChrom®-PEZ



### LC Conditions

Column: ZirChrom®-PEZ, 150 mm x 4.6 mm i.d.

Mobile Phase: Gradient Elution

A: 2 mM N,N,N',N' ethylenediaminetetra(methylenephosphonic acid)  
[EDTPA] 20 mM MES, 50 mM sodium chloride, pH 5.5

B: 2 mM EDTPA, 20 mM MES, 1.0 M sodium chloride pH 5.5

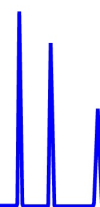
Time	%A	%B
0	75	25
10	0	100

Flow rate: 1.0 mL/min.

Temperature: Ambient

Detection: 280 nm

Injection volume: 5 µl



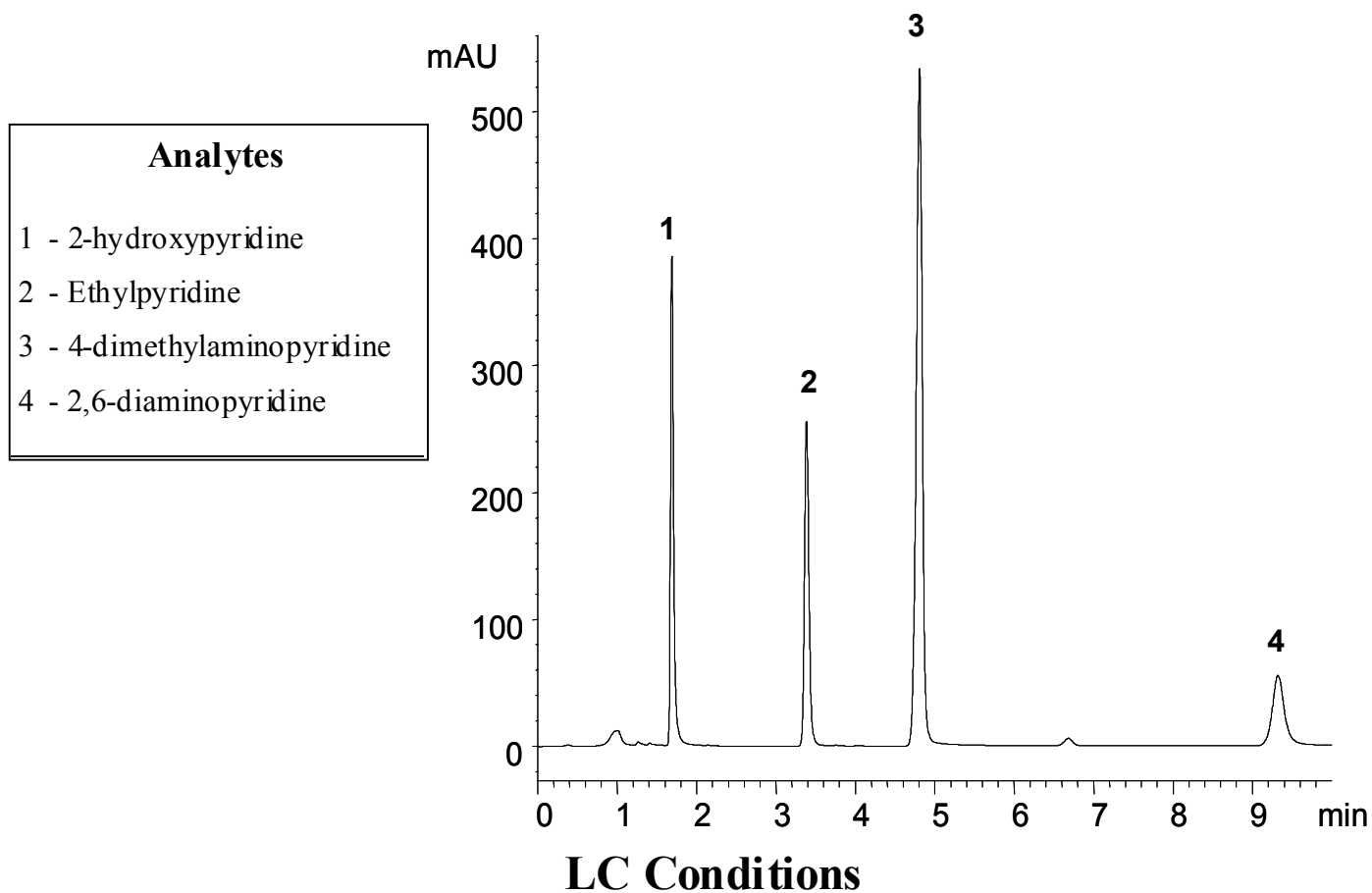


ZirChrom®

 Technical  
 Bulletin #253

... For Peak Performance

## Separation of Pyridines on ZirChrom®-PEZ



Column: ZirChrom®-PEZ, 150 x 4.6 mm i.d.

Mobile Phase:  
 2 mM N,N,N',N' ethylenediaminetetra  
 (methylenephosphonic acid), 5mM NaCl,  
 20mM MES, pH 5.5

Flow rate: 1.0 mL/min.  
 Temperature: 30 °C  
 Injection volume: 5 µL  
 Detection: 254 nm