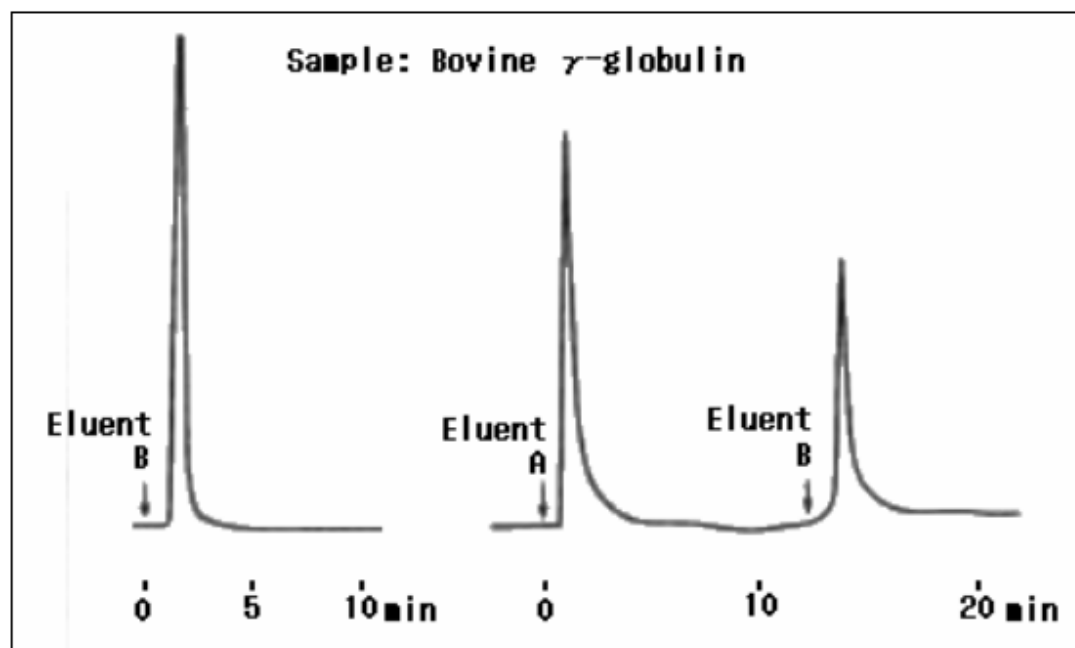


Bovine γ -Globulin (2) (APA-894)

Print

AFpak APA-894 (an affinity column) which has protein A as the ligand was used for the adsorption and elution of bovine γ -globulin.



Sample : Bovine γ -Globulin

Column : Shodex AFpak APA-894 (8.0mm I.D. x 50mm)
Eluent : (A) ; 0.1M Sodium phosphate buffer (pH4.5)
(B) ; 0.1M Sodium phosphate buffer (pH3.0)
Flow rate : 1.0mL/min
Detector : UV(280nm)
Column temp. : Room temp.