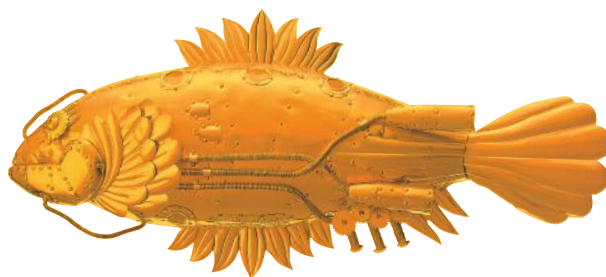


Shodex™



HPLC Columns

MANUAL

GPC KF-600

SHOWA
DENKO
EUROPE

Shodex HPLC Columns
Europe, Middle East, Africa, Russia

For technical support please use
contact details shown below:

SHOWA DENKO EUROPE GmbH
Shodex Business
Konrad-Zuse-Platz 3
81829 Munich, Germany

E-mail: support@shodex.de
Phone: +49 (0)89 93 99 62 37
www.shodex.de

Operation Manual

Shodex™ GPC KF-600 HQ series

(Please read this manual carefully before using the column to ensure performance and life.)

1. Introduction

Shodex GPC KF-600 HQ series are small volume type high-performance HPLC columns for GPC.

2. Specifications

Packing material:	Styrene-divinylbenzene copolymer.	
Column size:	6.0 I.D. x 150mm.	
Exclusion limit:	Please refer to the operation manual for Shodex GPC KF-800 series.	
Theoretical plate number:	(601~603)	17,000 minimum.
	(604)	10,000 minimum.
	(605, 606)	7,000 minimum.
	(606M)	8,000 minimum.
	(607)	5,000 minimum.
Maximum flow rate:	0.8 ml/min.	
Recommended flow rate:	0.4~0.6 ml/min.	
	In case of replacement of in-column solvent, set flow rate below 0.1ml/min.	
Maximum pressure:	(601~604)	6.0 MPa.
	(605~607, 606M)	0.6 MPa.
Maximum temperature:	45°C.	
Recommended flow rate:	25~40°C.	
Sample volume:	Injection volume should be less than one third of that for KF-800 series.	
In-column solvent:	THF.	

Note.

To get good performance, it is essential to use HPLC system with low dead volume.

Regarding other analytical conditions, please refer to the operation manual for Shodex GPC KF-800 series.