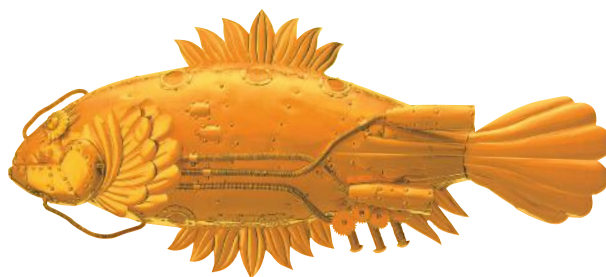


Shodex™



HPLC Columns

MANUAL

GPC HK-G

SHOWA
DENKO
EUROPE

Shodex HPLC Columns

Europe, Middle East, Africa, Russia

For technical support please use
contact details shown below:

SHOWA DENKO EUROPE GmbH

Shodex Business
Konrad-Zuse-Platz 3
81829 Munich, Germany

E-mail: support@shodex.de
Phone: +49 (0)89 93 99 62 37
www.shodex.de

Operation Manual

Shodex™ GPC HK-G

(Please read this manual carefully before using the column to ensure performance and life.)

1. Introduction

Shodex GPC HK-G is the guard filter for Shodex GPC HK-404L which is a rapid analysis Gel Permeation Chromatography column. GPC HK-G can be connected to the GPC HK-404L column inlet.

2. Handling Instructions <Important>

Caution! Please consult the MSDS for the reagents and solvents used with the columns for health concerns caused by acute exposure due to leakage from the column or adjoining tubing.

Attention! Use the column within the regular range of flow rate, pressure and temperature. The column performance may deteriorate when it is handled beyond the permissible range even for a short time.

3. Specifications

Product code	Product name	Mesh(μm)
F6700200	HK-G	0.5

Filter material: SUS 316

Screw type: Internally-threaded type No.10-32 UNF

4. Usable conditions

Product Name	Flow rate (mL/min)			Max Pressure (MPa)
	Normal	Max	Compatible solvents	
HK-G	0.3-1.0	2.0	0.3	25.0

5. Connection with a column

When using for the first time, please connect with a column as follows.

- 1) Set the flow rate at 0.3 mL/min, and flow the eluent into the HK-G about 1 minute.
- 2) Turn by hand the HK-G into the column. Then, using two spanners, tighten the HK-G into the column about 30 degrees turn.

Attention! Please note to overtighten. Over tightening may damage the holder tip screws.

6. Exchange method of a filter

When eluted behavior changed remarkably or the pressure rose by long-term use, please exchange a filter.

- 1) Remove the cap of the holder by a spanner, and replace a filter to a new filter (Product code: F6700100).
- 2) Tightening the cap of the holder by hand. Then, using two spanners, tighten about 180 degrees turn.

Attention! Please use a genuine replacement filter. When using a filter besides the genuine products, the product performance isn't guaranteed.

7. Attention

- 1) Do not remove the end fittings of the column to prevent performance deterioration and for safety reasons.
- 2) Do not make a strong impact on the column: such as hitting or dropping on the floor.
- 3) When the column is not used for two weeks or more, remove it from the LC system, close each end with a stopper, and store it at controlled room temperature.
- 4) Contact Shodex website (<http://www.shodex.com/>) or Shodex partners regarding product and analysis applications.