

# REFLECT™ IMMOBILIZED Polysaccharide Chiral Columns



## High Performance Chiral Columns at an Affordable Price

REFLECT™ immobilized chiral columns are rugged polysaccharide phases suitable for a wide range of chiral compounds. Unique, proprietary, phase coverage provides excellent peak shape and improved resolution versus leading chiral phases. High resolution greatly improves preparative loading, leading to greater productivity and higher purity separations. Combined with attractive pricing and rapid delivery, REFLECT™ chiral columns deliver the performance and productivity you expect.



- **NEW!** REFLECT™ I-Cellulose Z phase now available!
- Rugged, immobilized phase for long column lifetimes
- High efficiency media with excellent peak shape and loading capacity
- Compatible with a broad range of solvents and separation modes (NP, RP, Polar Organic, SFC)
- Fully scalable from 3- to 20  $\mu\text{m}$
- Fast delivery—all sizes, anywhere in the world

## The REFLECT™ Column Guarantee

If our analytical columns ( $\leq 4.6\text{mm ID}$ ) do not provide equivalent or better separations as compared to a competing column of the same particle size, phase type, and dimensions, return the column within 45 days for a full refund. Contact a REGIS Chromatography Sales Expert for full details.

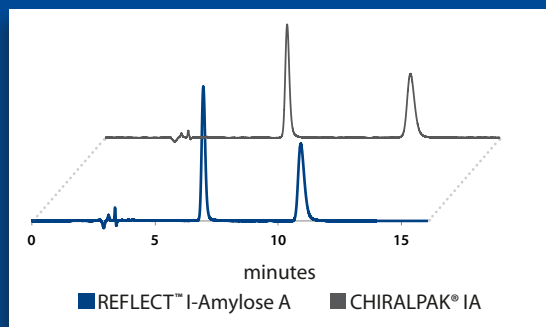
## Let Us Find the Best Column for Your Separation

REGIS offers a **free** chiral screening service with results delivered within three days. Visit [registech.com](http://registech.com) for details, or contact a REGIS Chromatography Sales Expert to get started today.



## Achieve Equal or Better Separations Compared to Leading Polysaccharide Phases

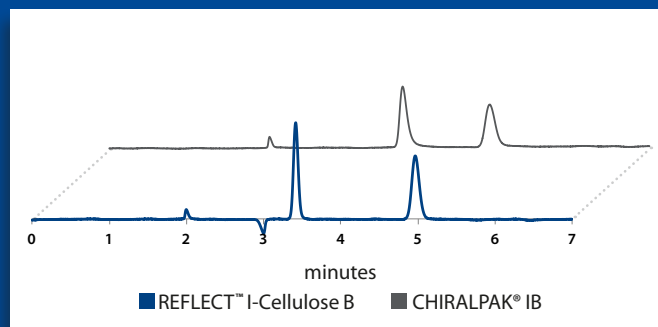
REFLECT™ I-Amylose A provides equivalent separation of Chlormezanone



Compound: Chlormezanone  
Column Size: 5  $\mu\text{m}$ , 25 cm x 4.6 mm  
Mobile Phase: (50/50) Hexane/IPA

Flow Rate: 1.0 mL/min  
Detection: UV 220 nm  
Catalog #: 1-591204-300

REFLECT™ I-Cellulose B provides better separation of Alprenolol



Compound: Alprenolol  
Column Size: 5  $\mu\text{m}$ , 25 cm x 4.6 mm  
Mobile Phase: (90/10/0.1) Hexane/IPA/DEA

Flow Rate: 1.5 mL/min  
Detection: UV 230 nm  
Catalog #: 1-592204-300

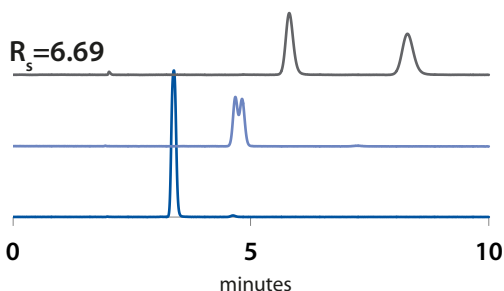


## REFLECT™ Columns Provide Broad Selectivity and Excellent Stability

REFLECT™ polysaccharide immobilized chiral columns are made using a unique production process of immobilizing the chiral selector on high purity silica gel. Immobilizing the selector improves the stability of the chiral phase and broadens the range of mobile phase options.

### BROAD SELECTIVITY

Optimize separation with a range of phases

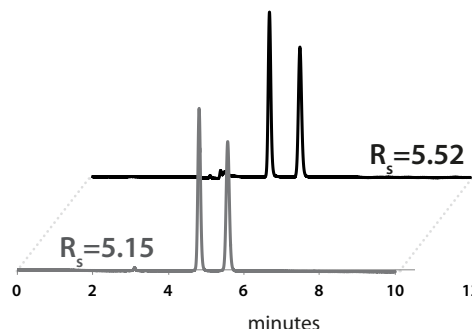


■ REFLECT I-Cellulose A ■ REFLECT I-Cellulose B ■ REFLECT I-Cellulose C

Compound: Nimodipine  
 Column Size: 5 µm, 25 cm x 4.6 mm  
 Mobile Phase: (85/15/0.1) Hexane/IPA/DEA  
 Flow Rate: 1.5 mL/min

### EXCELLENT STABILITY

No loss of resolution after over 400 column volumes of ethyl acetate



■ Initial run ■ After >400 column volumes of 100% ethyl acetate

Compound: Hydrobenzoin  
 Column: REFLECT I-Amylose A, 5 µm, 25 cm x 4.6 mm  
 Mobile Phase: (70/30) Hexane/Ethanol  
 Flow Rate: 1.0 mL/min

## REFLECT™ Immobilized Phase Characteristics

Column	Selector	EQUIVALENT Competitive Products	USP	Particle Sizes	ph Range
REFLECT™ I-Amylose A	Amylose tris (3,5-dimethylphenylcarbamate)	CHIRALPAK® IA, IA-3; LUX® i-Amylose 1	L99	3, 5, 10, 20 µm	2 – 8*
REFLECT™ I-Cellulose B	Cellulose tris (3,5-dimethylphenylcarbamate)	CHIRALPAK® IB, IB-3	N/A		
REFLECT™ I-Cellulose C	Cellulose tris (3,5-dichlorophenylcarbamate)	CHIRALPAK® IC, IC-3; LUX® i-Cellulose 5	N/A		
REFLECT™ I-Cellulose J	Cellulose tris (4-methylbenzoate)	Similar to CHIRALPAK® IJ, IJ-3	N/A		
REFLECT™ I-Cellulose Z	Cellulose tris (3-chloro-4-methylphenylcarbamate)	Similar to CHIRALCEL® OZ; LUX® Cellulose-2	N/A	3,5 µm	

\*Operating at the upper limit may shorten the column life.



To learn more about REFLECT™ immobilized and coated chiral stationary phases or for a personalized quote, contact a REGIS Chromatography Sales Expert at [chromsales@registech.com](mailto:chromsales@registech.com).

REFLECT™ is a trademark of REGIS Technologies, Inc. DAICEL®, CHIRALCEL®, CHIRALPAK® are registered trademarks of DAICEL Corporation. All such trademarks are used by Chiral Technologies under license from DAICEL Corporation. Chiral Technologies, Inc. is a subsidiary of DAICEL Corporation. LUX® is a registered trademark of Phenomenex Inc.

**BGB** GC|LC  
MS|CE

[www.bgb-shop.com](http://www.bgb-shop.com)

Switzerland: BGB Analytik AG • Rohrmattstrasse 4 • 4461 Böckten • Phone +41 61 991 00 46 • Fax +41 61 991 00 25 • [sales@bgb-analytik.com](mailto:sales@bgb-analytik.com)  
 BGB Analytik SA • Route de Pré-Bois 20 • 1215 Genève 15 • Phone +41 22 788 49 43 • Fax +41 22 788 49 45 • [sales.fr@bgb-analytik.com](mailto:sales.fr@bgb-analytik.com)  
 Benelux: BGB Analytik Benelux B.V. • Drielandendreef 42-44 • 3845 CA Harderwijk • Phone +31 341 700270 • Fax +31 341 700271 • [sales.benelux@bgb-analytik.com](mailto:sales.benelux@bgb-analytik.com)  
 France: BGB Analytik France S.A.S. • 81 Vie de l'Etraz • 01630 St. Jean de Gonville • Phone +33 450 488567 • Fax +33 450 562378 • [sales.fr@bgb-analytik.com](mailto:sales.fr@bgb-analytik.com)  
 Germany: BGB Analytik Vertrieb GmbH • Mühlestraße 1 • 79539 Lörrach • Phone +49 7621 5884270 • Fax +49 7621 5884289 • [sales.de@bgb-analytik.com](mailto:sales.de@bgb-analytik.com)  
 Turkey: BGB Analytik Laboratuvar Malzemeleri Ticaret A.Ş. • Starport Residence • Yenişehir Mah. Osmanlı Bulvarı. • Sumbül Sok. No:10, Daire: 193 • 34912 Kurtköy, Pendik, İstanbul • Phone +90 2169092048 • [sales.tr@bgb-analytik.com](mailto:sales.tr@bgb-analytik.com)