



CHIRAL Stationary Phases

Depend on innovative columns from the experts in chiral chromatography.



PACKED COLUMNS AND BULK MEDIA

Compatible with SFC & HPLC

Scale from Analytical to Prep

Robust Phases for Long Life



BGB

GC	LC
MS	CE

WHELK-O[®] 1

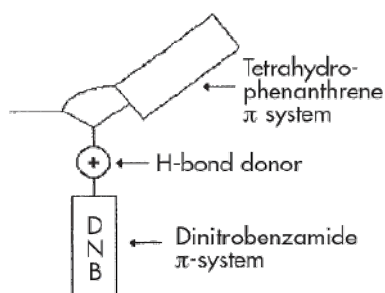
1-(3,5-dinitrobenzamido)-1,2,3,4-tetrahydrophenanthrene

The Original Immobilized Phase

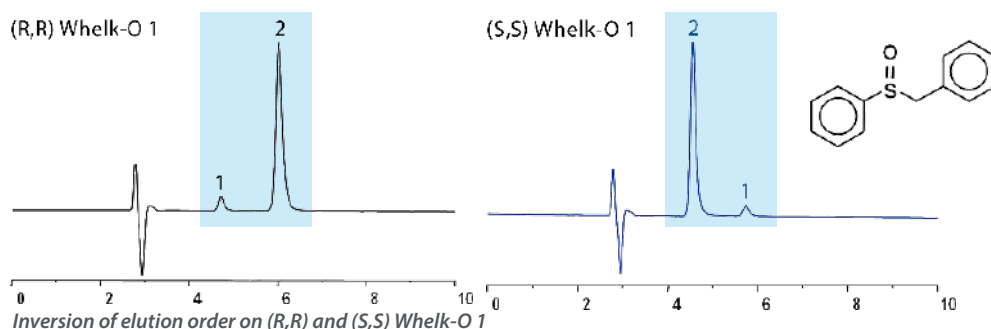
- Excellent method development column with applicability to a wide range of compound classes
- Alternate selectivity to polysaccharide chiral stationary phases
- Covalently bonded for long term performance and broad mobile phase compatibility
- Broad range of particle sizes and dimensions for analytical to preparative scale separations
- High loading capacity for excellent scalability in preparative applications
- Choice of enantiomeric phases allows inversion of peak elution order

Chemistry

General purpose Pirkle-type chiral phase designed to achieve selectivity through pi-pi interactions, dipole moment, hydrogen bonding interactions, and additional selectivity based on structure. Fully endcapped and bonded to high purity silica. Covalent bonding makes it compatible with all commonly used mobile phases, including aqueous systems. This column can be used in both normal phase and reversed phase with minimal equilibration times when switching between the two modes.



Key functional groups of the Whelk-O 1 involved in chiral recognition



OTHER PIRKLE-TYPE PHASES AVAILABLE

Alpha Burke 2

DACH-DNB

Leucine

Phenylglycine

Pirkle 1-J

β -Gem 1

ULMO

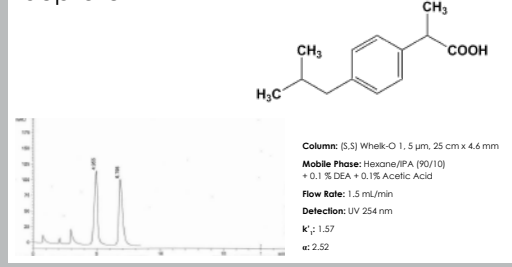
Whelk-O 2

Applications

- Chiral Screening
- Quality Control & Quality Assurance
- Chiral Purifications in Drug Discovery & Development
- Agricultural & Food Safety
- And many others

Visit www.bgb-shop.com/ regis for applications.

Ibuprofen



REGISPACK™

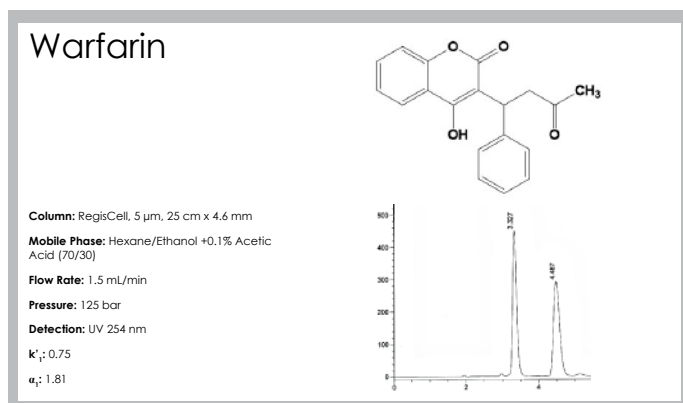
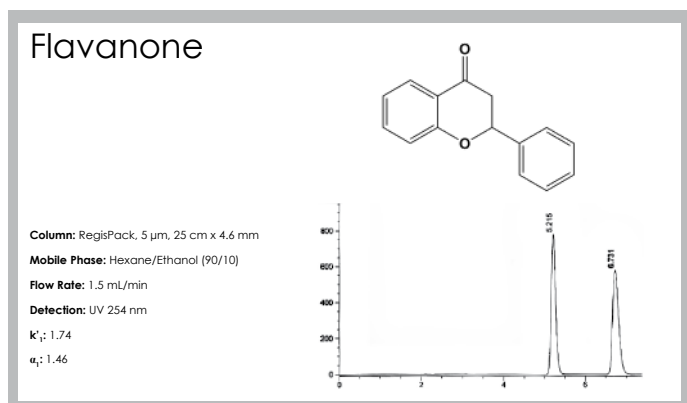
USP L51

tris-(3,5-dimethylphenyl) carbamoyl amylose

REGISCELL™

USP L40

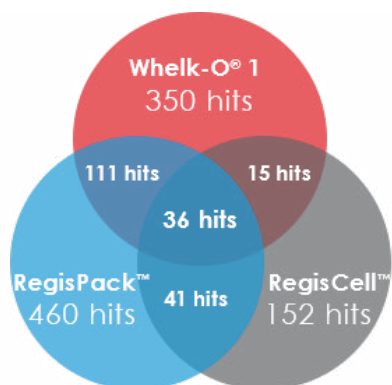
tris-(3,5-dimethylphenyl) carbamoyl cellulose



- Polysaccharide chiral columns with broad applicability for the separation of enantiomers
- High pressure limit (450 bar) allows faster runs and equilibration times
- Compatible with normal phase, reversed phase, and SFC conditions*

*Consult the Regis Care & Use Guides for full details on solvent recommendations.

METHOD DEVELOPMENT KITS



Separate more than 75% of all chiral compounds with just three columns: Whelk-O[®] 1, RegisPack™, and RegisCell™.

Request the application note today to learn more.

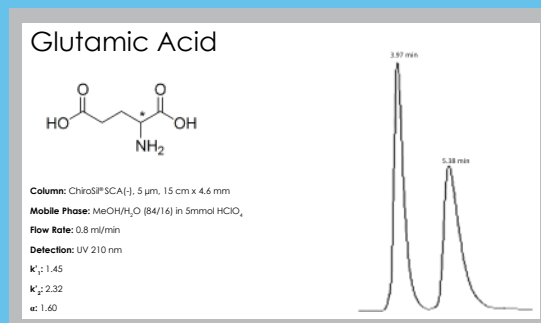
DIMENSIONS	PARTICLE SIZE	CATALOG #
5 cm x 4.6 mm	3.5* & 3 μ m	1-790103-300
10 cm x 4.6 mm	3.5* & 3 μ m	1-790111-300
15 cm x 4.6 mm	3.5* & 3 μ m	1-790112-300
5 cm x 4.6 mm	5 μ m	1-790103-300
10 cm x 4.6 mm	5 μ m	1-790102-300
15 cm x 4.6 mm	5 μ m	1-790104-300
25 cm x 4.6 mm	5 μ m	1-790101-300

Kits include one each of Whelk-O 1 (order must specify preference of S,S or R,R), RegisPack, and RegisCell chiral columns.

*Whelk-O 1 is available in 3.5 μ m.

CHIOSIL[®] & CHIOSIL ME

(+) or (-)-(18-Crown-6)-tetracarboxylic acid

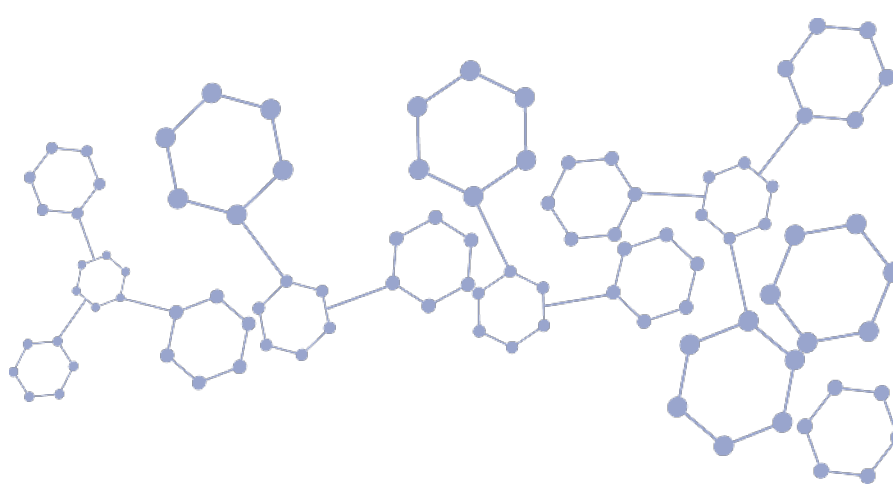


- Best choice for the separation of amino acids and compounds containing primary amines
- Exhibits excellent durability due to covalent bonding
- Columns available in both enantiomeric forms, which allows for the inversion of peak elution order
- Most robust crown ether column for HPLC

Visit www.bgb-shop.com/regis-chirosil for ordering information.

CHIRAL

Stationary Phases



MOST POPULAR REGIS CHIRAL PHASES AND COLUMN DIMENSIONS

PARTICLE SIZE	COLUMN DIMENSIONS	(S,S) WHELK-O® 1 CATALOG #	(R,R) WHELK-O® 1 CATALOG #	REGISPACK™ CATALOG #	REGISCELL™ CATALOG #	REGISPACK™ CLA-1 CATALOG #
1.8 µm	5 cm x 2.1 mm	1-780163-300	1-780263-300	N/A	N/A	N/A
	5 cm x 3.0 mm	1-780165-300	1-780265-300	N/A	N/A	N/A
	5 cm x 4.6 mm	1-780162-300	1-780262-300	N/A	N/A	N/A
	10 cm x 2.1 mm	1-780164-300	1-780264-300	N/A	N/A	N/A
	10 cm x 3.0 mm	1-780166-300	1-780266-300	N/A	N/A	N/A
	10 cm x 4.6 mm	1-780161-300	1-780261-300	N/A	N/A	N/A
3 µm*	5 cm x 4.6 mm	1-780120-300	1-780220-300	1-783507-300	1-784507-300	1-793507-300
	10 cm x 4.6 mm	1-780121-300	1-780221-300	1-783502-300	1-784502-300	1-793502-300
	15 cm x 4.6 mm	1-780122-300	1-780222-300	1-783503-300	1-784503-300	1-793503-300
	25 cm x 4.6 mm	1-780123-300	1-780223-300	1-783504-300	1-784504-300	1-793504-300
5 µm	5 cm x 4.6 mm	1-780152-300	1-780252-300	1-783101-300	1-784101-300	1-793101-300
	10 cm x 4.6 mm	1-780151-300	1-780251-300	1-783102-300	1-784102-300	1-793102-300
	15 cm x 4.6 mm	1-780105-300	1-780205-300	1-783103-300	1-784103-300	1-793103-300
	25 cm x 4.6 mm	1-780101-300	1-780201-300	1-783104-300	1-784104-300	1-793104-300
10 µm	5 cm x 4.6 mm	1-786906-300	1-786907-300	1-783201-300	1-784201-300	1-793201-300
	10 cm x 4.6 mm	1-786908-300	1-786909-300	1-783202-300	1-784202-300	1-793202-300
	15 cm x 4.6 mm	1-786251-300	1-786252-300	1-783203-300	1-784203-300	1-793203-300
	25 cm x 4.6 mm	1-786615-300	1-786515-300	1-783204-300	1-784204-300	1-793204-300
16 µm	15 cm x 4.6 mm	1-786351-300	1-786361-300	N/A	N/A	N/A
20 µm	25 cm x 4.6 mm	1-781501-300**	1-781401-300**	1-783304-300	1-784304-300	1-793304-300

*Whelk-O 1 packaged with 3.5µm particle size.

**20µm Whelk-O 1 packaged with YMC silica. All other particle sizes packaged with Kromasil silica.

For more information and to place an order visit
www.bgb-shop.com/regs.

BGB GC|LC
MS|CE

DR-BGB-1808

www.bgb-shop.com

Switzerland: BGB Analytik AG • Rohrmattstrasse 4 • 4461 Böckten • Phone +41 61 991 00 46 • Fax +41 61 991 00 25 • sales@bgb-analytik.com

BGB Analytik SA • Route de Pré-Bois 20 • 1215 Genève 15 • Phone +41 22 788 49 43 • Fax +41 22 788 49 45 • sales.fr@bgb-analytik.com

Benelux: BGB Analytik Benelux B.V. • Daltonstraat 17 • 3846 BX Harderwijk • Phone +31 341 700270 • Fax +31 341 700271 • sales.benelux@bgb-analytik.com

France: BGB Analytik France S.A.S. • 81 Vie de l'Etraz • 01630 St. Jean de Gonville • Phone +33 450 488567 • Fax +33 450 562378 • sales.fr@bgb-analytik.com

Germany: BGB Analytik Vertrieb GmbH • Josefstrasse 19a • 79618 Rheinfelden • Phone +49 7623 7173110 • Fax +49 7623 7173199 • sales.de@bgb-analytik.com