



SMALL SIZE  
**BIG**  
DIFFERENCE

## MIGHTY IN PERFORMANCE

### *PureView Certified and MS Certified Vials*

It's a common misconception that all vials are created equal. In fact, their quality and cleanliness can vary significantly. Many people think vials and caps are an inexpensive commodity that won't impact your results, but that's not the case.

Vials and closures are a critical part of your daily workflow – they're as important as the instruments and columns you trust to get accurate results day after day. Not only do their physical attributes affect overall analysis, but also their quality of glass and septa play a key role in your outcomes. Contamination from substandard glass or poor-quality septa can lead to interferences, inaccuracies, and failures, which ultimately drags down lab productivity.



Our superior range of vials and caps – **PureView™ Certified and PureView MS Certified** – facilitate consistent results time and again. They may be small in size, but they're *mighty in performance*.

**SHOP NOW!**

[www.perkinelmer.com/vials](http://www.perkinelmer.com/vials)

## PureView Certified Vials

Our range of certified vials are manufactured from Type 1 borosilicate glass which meets all USP, JP, and EP requirements. The low-expansion, coefficient glass exhibits excellent thermal conductivity and provides an inert surface with a low free ion content, giving you accurate results every time.

Produced to our exacting tolerances to facilitate uninterrupted analysis and minimize unplanned downtime, no product is placed into inventory without passing cleanliness and performance testing for consistent results.

Packaged in an ISO class 8 clean room environment, there is no risk of organic contaminants, helping to maintain analysis sensitivity levels.

PureView certified vials are available in 2 mL autosampler and 20 mL headspace vials. For added convenience and a guaranteed fit, a number of vial and cap kits are also available.



### 2 mL – PureView CERTIFIED VIALS

Select from a range of crimp or screw vials, in amber or clear glass. All certification details are available at [www.perkinelmer.com/COA](http://www.perkinelmer.com/COA) where you simply enter the part number and lot number to retrieve the information.

	Clear Screw	Clear Screw Write on Spot	Amber Screw Write on Spot	Clear Crimp Write on Spot	Amber Crimp Write on Spot
					
<b>Neck Diameter</b>	9 mm	9 mm	9 mm	11 mm	11 mm
<b>Vial Dimensions</b>	12 x 32 mm	12 x 32 mm	12 x 32 mm	12 x 32 mm	12 x 32 mm
<b>Part Number 100 pkg.</b>	N9305087	N9305088	N9305089	N9305085	N9305086
<b>Part Number 1,000 pkg.</b>	N9305097	N9305098	n/a	N9305095	N9305096

### 20 mL – PureView CERTIFIED VIALS

Select from a range of crimp or screw vials. All certification details are available at [www.perkinelmer.com/COA](http://www.perkinelmer.com/COA) where you simply enter the part number and lot number to retrieve the information.

	Clear Crimp Round Bottom	Clear Crimp Round Bottom Write on Spot	Clear Screw Flat Bottom Write on Spot	Clear Screw Round Bottom Write on Spot	Clear Crimp Flat Bottom Write on Spot
					
<b>Neck Diameter</b>	20 mm	20 mm	18 mm	18 mm	20 mm
<b>Vial Dimensions</b>	23 x 75.5 mm	23 x 75.5 mm	22.6 x 75.5 mm	23 x 75.5 mm	22.6 x 75.5 mm
<b>Part Number 100 pkg.</b>	N9305090	N9305091	N9305092*	N9305093	N9305094*

\* These dimensions are suitable for non-PerkinElmer instrumentation.

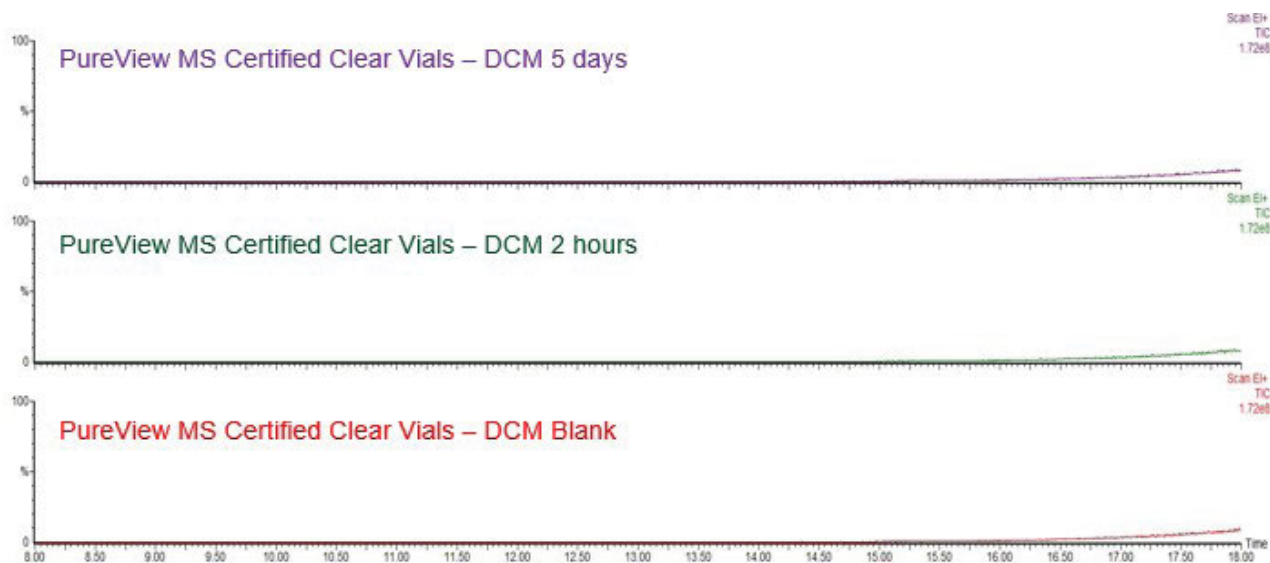
# SMALL SIZE CONSISTANT RESULTS



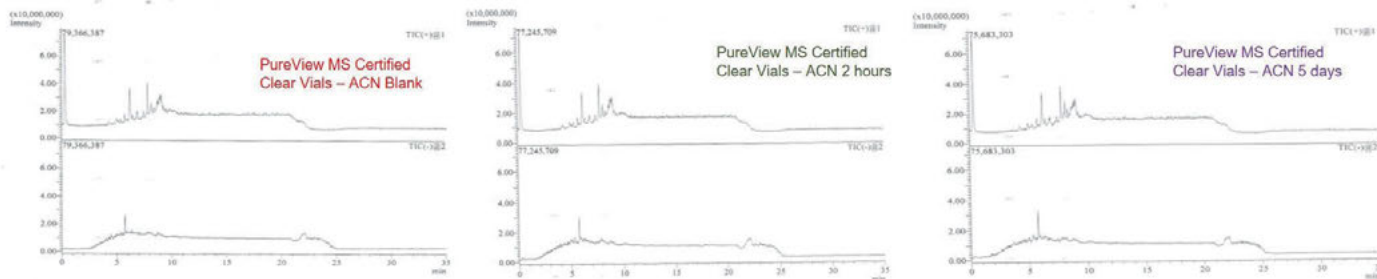
## PureView MS Certified Vials

Vials and caps are a critical part of a sample workflow and can be overlooked in any out of specification investigation where inaccurate peaks occur. Lower quality vials and caps can be a source of sample contamination. Our range of PureView MS certified vials and range of caps, including the ultralow bleed septa, have been thoroughly tested for residuals and approved on MS systems. So, you can have complete confidence in your results and minimize unplanned laboratory downtime.

Residuals testing by GC/MS and LC/MS is completed on every batch of PureView MS certified vials by replicating typical user conditions. Vials are exposed to commonly used solvents and at given time intervals. This enables confirmation that there is a low background, ensuring maximum sensitivity. An example of clear PureView MS Certified vials analyzed at 2-hour and 5-day intervals is shown on GC/MS and LC/MS below.



GC/MS TIC scans of PureView MS Certified clear vials with DCM (blank, 2-hour extraction, 5-day extraction).



LC/MS (+) and (-) TIC scans of PureView MS Certified clear vials with ACN (blank, 2-hour extraction, 5-day extraction).






## 2 mL – PureView MS CERTIFIED VIALS

Select from a range of crimp or screw vials, in amber or clear glass. All certification details are available at [www.perkinelmer.com/COA](http://www.perkinelmer.com/COA) where you simply enter the part number and lot number to retrieve the information.

	Clear Screw	Clear Crimp Write on Spot	Amber Crimp Write on Spot	Clear Screw Write on Spot	Amber Screw Write on Spot
					
<b>Neck Diameter</b>	9 mm	11 mm	11 mm	9 mm	9 mm
<b>Vial Dimensions</b>	12 x 32 mm	12 x 32 mm	12 x 32 mm	12 x 32 mm	12 x 32 mm
<b>Part Number 100 pkg.</b>	N9305077	N9305075	N9305076	N9305078	N9305079
<b>Part Number 1,000 pkg.</b>	N9305101	N9305099	N9305100	N9305102	n/a

## 20 mL – PureView MS CERTIFIED HEADSPACE VIALS

Select from a range of crimp or screw vials, in clear glass. All certification details are available at [www.perkinelmer.com/COA](http://www.perkinelmer.com/COA) where you simply enter the part number and lot number to retrieve the information.

	Clear Crimp Round Bottom Write on Spot	Clear Screw Round Bottom Write on Spot	Clear Crimp Flat Bottom Write on Spot	Clear Screw Flat Bottom Write on Spot
				
<b>Neck Diameter</b>	20 mm	18 mm	20 mm	18 mm
<b>Vial Dimensions</b>	23 x 75.5 mm	23 x 75.5 mm	22.6 x 75.5 mm	22.6 x 75.5 mm
<b>Part Number 100 pkg.</b>	N9305081	N9305082	N9305083*	n/a
<b>Part Number 1,000 pkg.</b>	N9305080	n/a	n/a	N9305084*

\* These dimensions are suitable for non-PerkinElmer instrumentation.

## AUTOSAMPLER CAPS

A range of different caps/septa are available to allow you to select the material most suited to your application. The ultra-low bleed septa offer the ultimate in inertness. For details of our full range of autosampler caps, crimp, snap and screw, available visit [www.perkinelmer.com/Vials](http://www.perkinelmer.com/Vials).

	N9306015	N9306362	N9304148	N9306203	N9306364
					
Cap Type	Crimp	Screw	Crimp	Screw	Screw
Description	Aluminum (Silver) Cap PTFE/RR Septa	Blue Cap w/PTFE/Silicone ULB Septa	Aluminum (Silver) Cap PTFE/Silicone ULB Septa	Blue Cap w/Red PTFE/White Silicone Septa (Pre-Slit)	Blue Cap w/PTFE/Silicone ULB Septa (Pre-Slit)
Quantity	100 pkg.	100 pkg.	100 pkg.	100 pkg.	100 pkg.

## HEADSPACE CAPS

A range of different caps/septa are available to allow you to select the material most suited to your application. The ultra-low bleed septa offers the ultimate in inertness. For details of our full range of headspace vial caps available, crimp and screw, visit [www.perkinelmer.com/Vials](http://www.perkinelmer.com/Vials).

	N9304186	N9302975	N9304146	N9304175
				
Description	Silver Crimp Cap, PTFE/Silicone Septa (Tan/White)	Silver Crimped Cap, Skived Pressure Relief PTFE/Silicone Septa	Silver Crimp Cap, PTFE/Silicone Star Spring Septa	Magnetic Screw Cap, ULB PTFE/Silicone Septa
Quantity	1,000 pkg.	1,000 pkg.	100 pkg.	100 pkg.