

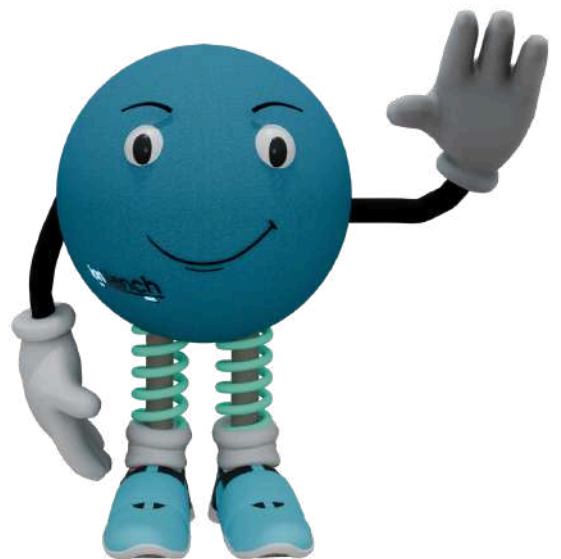


®

ionBench

TURNKEY SOLUTION PROVIDERS

in tailor made analytical laboratory furniture and accessories



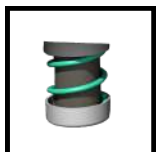
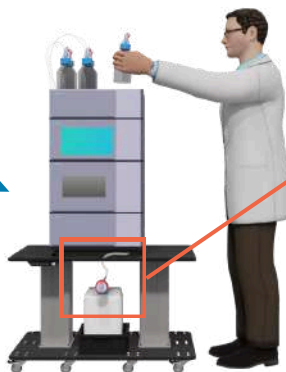
“Follow my lead and experience ionBench’s know-how..”

Committed to provide you the best in :

Safety

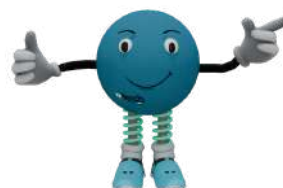
Set your height for an easy access to mobile phase bottles.

Waste tubing management capabilities for a safer working environment.



Specially designed noise enclosure to reduce noise levels & specific designed dampening vibrations springs.

Stable, heavy load capacity, Trespa chemical resistant work surface, our ionBenches can be equipped with a cable management system to keep a neat environment.



Committed to provide benches that respect

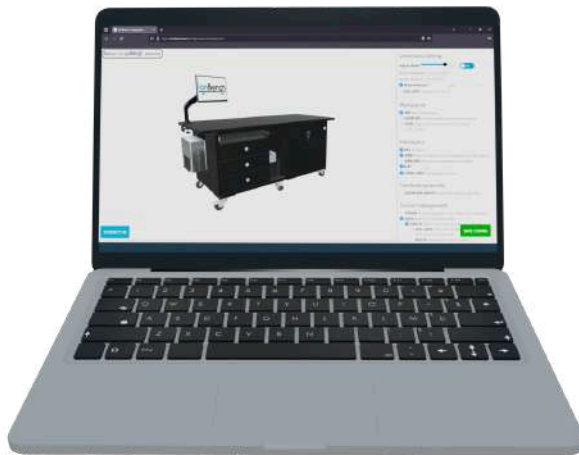
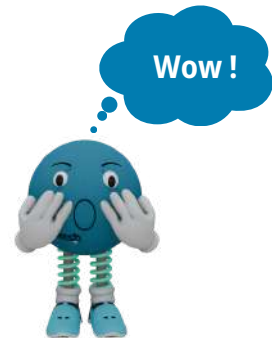
Ergonomics

Proven 30% footprint saving.

BEFORE



AFTER



Use our built-in configurator to imagine **your** ionBench.

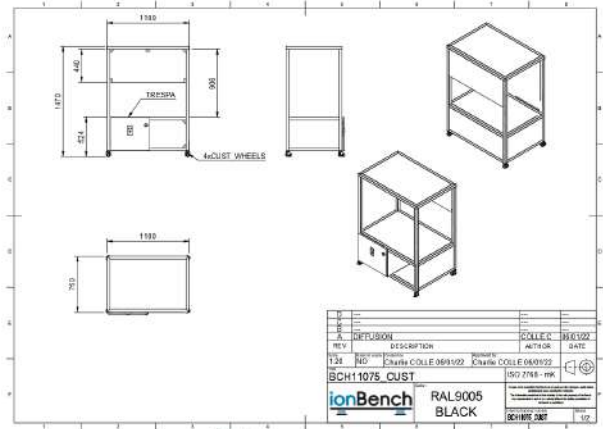
Maintenance features to facilitate access & improve Musculoskeletal health. Heavy duty lockable caster wheels equipped with wide foot-brake to lock the swivel and rotation.



Committed to respect your requirements & specifications

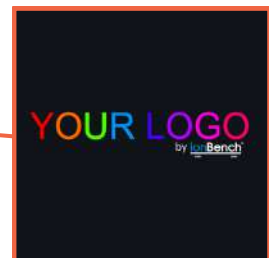
Custom-made

Whatever are your requirements, we can design specific ionBenches to optimize your laboratory footprint.



Specific needs or expectations?
Our R&D department can provide you a custom ionBench solution.

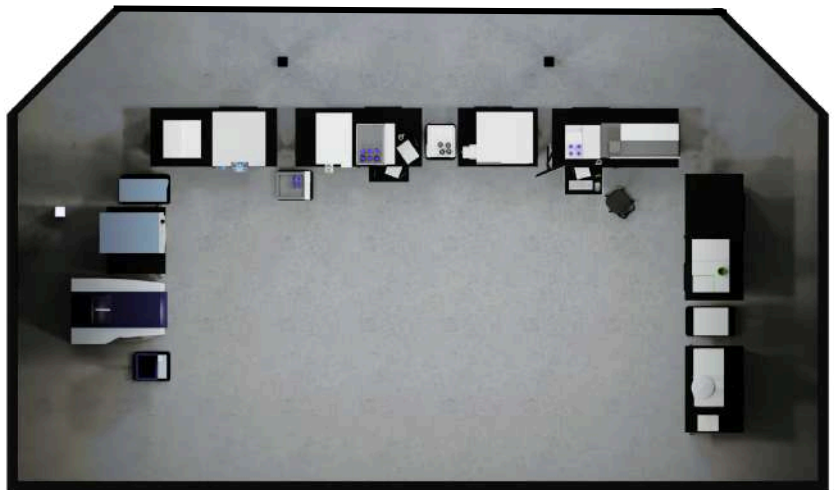
Personalize your ionBench and make it **your** own.





Custom - Design your entire analytical lab

Enjoy a safer and healthier environment



**Tailor-made
3D visual**



**Space
optimization**



**Increased
safety**

With ionBench EVERYTHING is POSSIBLE

Specific
solutions for :

- LC/GC/MS
- ICP-MS/OES
- HPLC
- Liquid handler
- Sequencer
- Flow cytometer

And many more possibilities...



Come with me !

**Explore ionBench's world
for a better experience.**