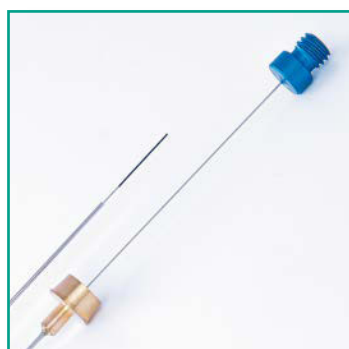




# CTC SPME Fibers

Made in Switzerland 



SPME reduces the time required for sample preparation and eliminates the use of large volumes of extraction solvents. In SPME, analytes establish an equilibrium among the sample matrix, the headspace above the sample and a stationary phase coated on a fused silica fiber. The adsorbed compounds are thermally desorbed from the fiber to a capillary GC column. Because no solvent is injected and the analytes are rapidly desorbed onto the column, minimum detection limits are improved and resolution is maintained. SPME is useful in many different analysis, including characterization of environmental, forensic, food/food and pharmaceutical compounds.

SPME is compatible with analyte separation/detection by gas chromatography or HPLC, and provides linear results for wide concentrations of analytes.

Part No.	Description	Qty.	Price
CTC-FIB-A-85/10-P1	CTC SPME Fiber Acrylat 85µm, 10mm	ea.	<a href="#">Price</a>
CTC-FIB-A-85/10-P3	CTC SPME Fiber Acrylat 85µm, 10mm	pk.3	<a href="#">Price</a>
CTC-FIB-A-85/10-P5	CTC SPME Fiber Acrylat 85µm, 10mm	pk.5	<a href="#">Price</a>
CTC-FIB-C-WR-95/10-P1	CTC SPME Fiber Carbon WR 95µm, 10mm	ea.	<a href="#">Price</a>
CTC-FIB-C-WR-95/10-P3	CTC SPME Fiber Carbon WR 95µm, 10mm	pk.3	<a href="#">Price</a>
CTC-FIB-C-WR-95/10-P5	CTC SPME Fiber Carbon WR 95µm, 10mm	pk.5	<a href="#">Price</a>
CTC-FIB-P-7/10-P1	CTC SPME Fiber PDMS 7µm, 10mm	ea.	<a href="#">Price</a>
CTC-FIB-P-7/10-P3	CTC SPME Fiber PDMS 7µm, 10mm	pk.3	<a href="#">Price</a>
CTC-FIB-P-7/10-P5	CTC SPME Fiber PDMS 7µm, 10mm	pk.5	<a href="#">Price</a>
CTC-FIB-P-30/10-P1	CTC SPME Fiber PDMS 30µm, 10mm	ea.	<a href="#">Price</a>
CTC-FIB-P-30/10-P3	CTC SPME Fiber PDMS 30µm, 10mm	pk.3	<a href="#">Price</a>
CTC-FIB-P-30/10-P5	CTC SPME Fiber PDMS 30µm, 10mm	pk.5	<a href="#">Price</a>
CTC-FIB-P-100/10-P1	CTC SPME Fiber PDMS 100µm, 10mm	ea.	<a href="#">Price</a>
CTC-FIB-P-100/10-P3	CTC SPME Fiber PDMS 100µm, 10mm	pk.3	<a href="#">Price</a>
CTC-FIB-P-100/10-P5	CTC SPME Fiber PDMS 100µm, 10mm	pk.5	<a href="#">Price</a>
CTC-FIB-SEL5-S1	CTC SPME Fiber Kit (one each)	Kit	<a href="#">Price</a>

## Comparison CTC Fibers with Supelco Fibers

### 7µm PDMS Fiber

Sample: 10ml Water + PAH Standard  
(20ng/Compound)

Extraction: 30min Immersion at 40°,  
agitating at 250 rpm

Desorption: 1min at 250° in SPI Liner  
directly connected to the column

Column: 15m x 0.25mm ID Inertcap  
5MS/Sil (GL-Science)

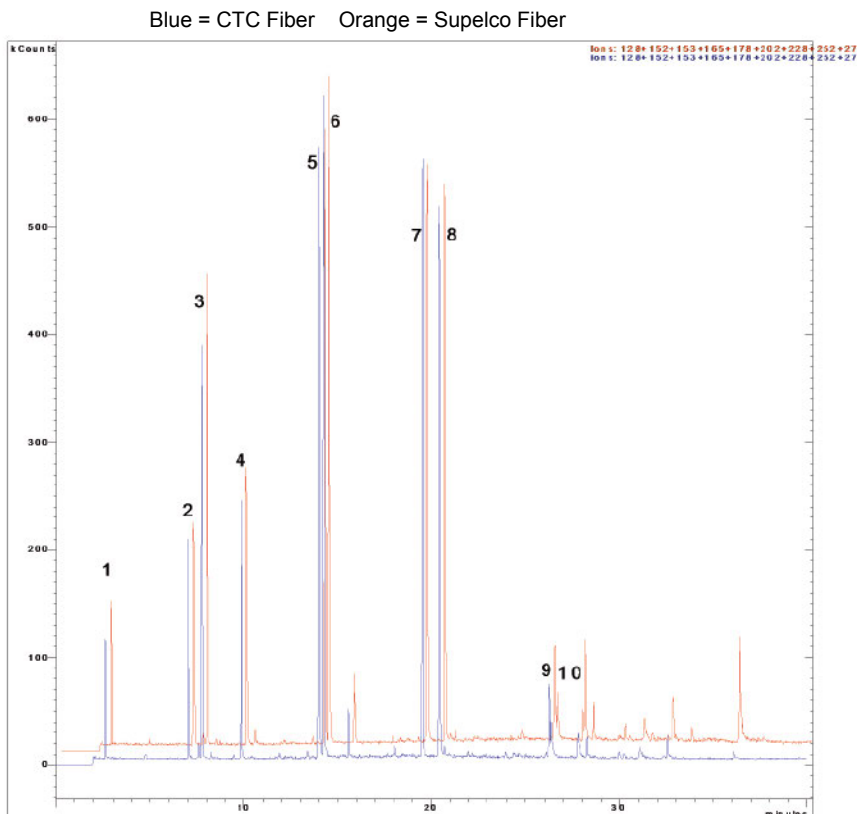
Temp.progr.: 90°-1min-5°/min-320°

Sampler: CTC Combipal

GC: Varian 3400

MS: Varian Saturn IonTrap

1. Naphthalene
2. Acenaphthylene
3. Acenaphthene
4. Fluorene
5. Phenanthrene
6. Anthracene
7. Fluoranthene
8. Pyrene
9. Benzo(a)anthracene
10. Chrysene



### 95µm Carbo WR Fiber

Sample: 10ml Water + 3g NaCl +  
502.2 Mega Mix Restek  
P/N 30431 (20ng/Compound)

Extraction: 15min HS at 50°, agitating at  
250 rpm

Desorption: 1min 250° in SPI Liner directly  
connected to the column

Column: 30m x 0.32mm ID 1.8µm  
BGB-624

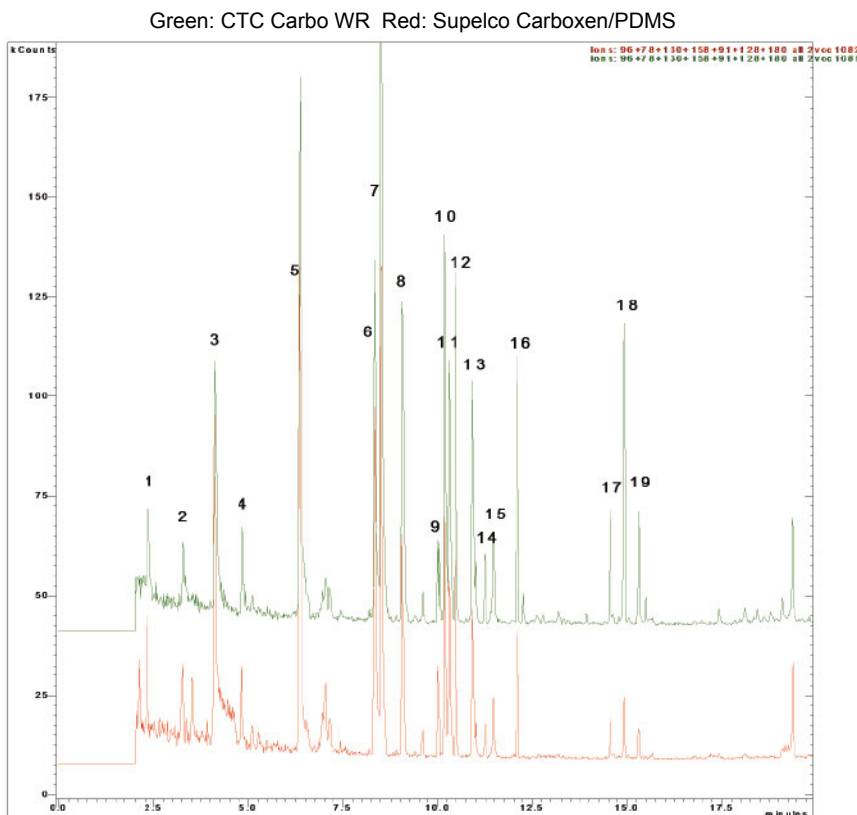
Temp.progr.: 50°-1min-5°/min-220°

Sampler: CTC Combipal

GC: Varian 3400

MS: Varian Saturn 2 IonTrap

1. 1,1-Dichloroethene
2. cis-1,2-Dichloroethene
3. Benzene
4. Trichloroethylene
5. Toluene
6. Ethylbenzene
7. m-,p- Xylene
8. o-Xylene
9. Bromobenzene
10. 2-Chlorotoluene
11. 1,3,5-Trimethylbenzene
12. 4-Chlorotoluene
13. tert-Butylbenzene
14. 1,2,4-Trimethylbenzene
15. sec-Butylbenzene
16. n-Butylbenzene
17. 1,2,4-Trichlorobenzene
18. Naphthalene
19. 1,2,3-Trichlorobenzene



Prices may change without notice and do not include VAT and shipping.