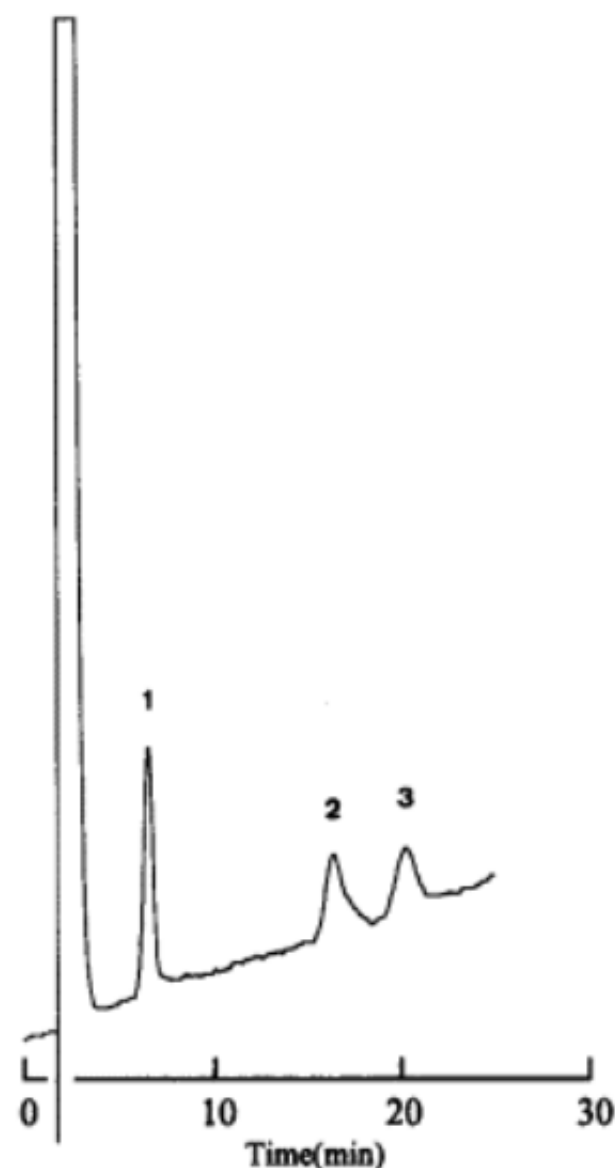


COSMOSIL Application Data

Column: 5NH₂-MS
Column size: 4.6mm I.D.-150mm
Mobile phase: Acetonitrile/ 20mmol/l Phosphate
buffer(pH7) = 70/30
Flow rate: 1.0 ml/min
Temperature: 30°C
Detection: RI, Range 1×10^{-5} RIU/F.S.

Sample: 1; *D*-(+)-Glucose (10 μg)
2; *D*-Mannosamine (11 μg)
3; *D*-Glucosamine (10 μg)



NACALAI TESQUE, INC

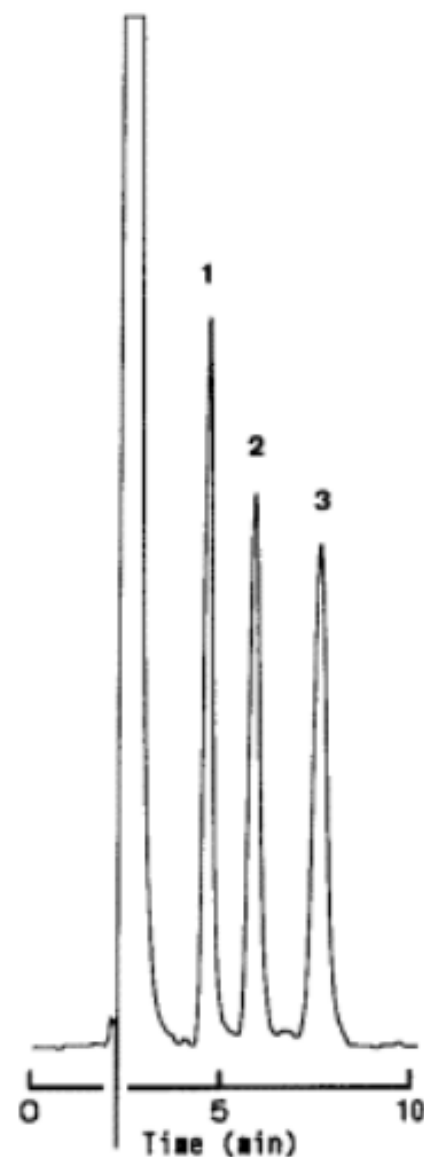
AP-0141

COSMOSIL Application Data

Column: 5NH₂-MS
Column size: 4.6mm I.D.-150mm
Mobile phase: Acetonitrile/ H₂O = 80/20
Flow rate: 1.0 ml/min
Temperature: 30°C
Detection: RI, Range 4×10^{-5} RIU/F.S.

Sample:

- | | |
|--|---------|
| 1; <i>meso</i> -Erythritol [<i>meso</i> -Erythrite] | (50 μg) |
| 2; Xylitol | (50 μg) |
| 3; <i>D</i> -Glucitol [Sorbitol] | (50 μg) |



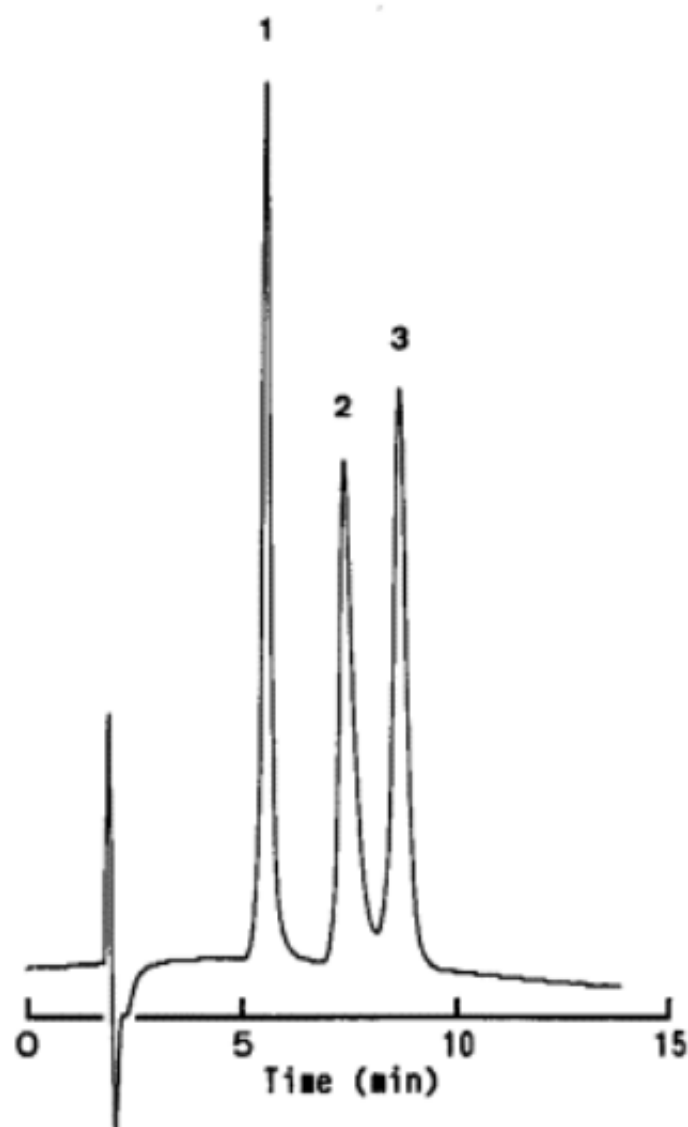
NACALAI TESQUE, INC

AP-0140

COSMOSIL Application Data

Column: 5NH₂-MS
Column size: 4.6mm I.D.-150mm
Mobile phase: Acetonitrile/ H₂O = 60/40
Flow rate: 1.0 ml/min
Temperature: 30°C
Detection: RI, Range 0.5×10^{-5} RIU/F.S.

Sample: 1; α -Cyclodextrin (7.0 μ g)
2; β -Cyclodextrin (7.0 μ g)
3; γ -Cyclodextrin (7.0 μ g)



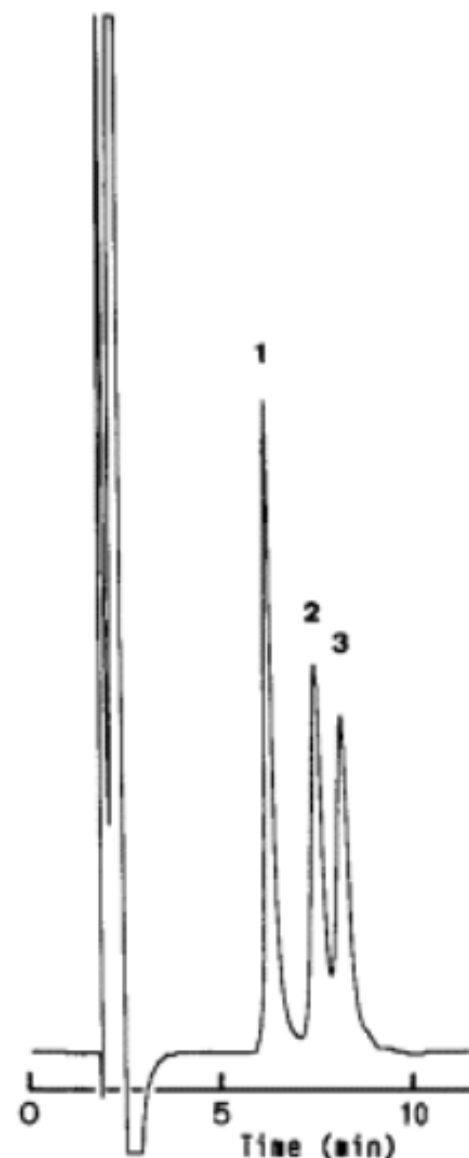
NACALAI TESQUE, INC

AP-0139

COSMOSIL Application Data

Column: 5NH₂-MS
Column size: 4.6mm I.D.-150mm
Mobile phase: Acetonitrile/ H₂O = 70/30
Flow rate: 1.0 ml/min
Temperature: 30°C
Detection: RI, Range 2×10^{-5} RIU/F.S.

Sample: 1; Sucrose (20 μ g)
2; Maltose (20 μ g)
3; Lactose (20 μ g)



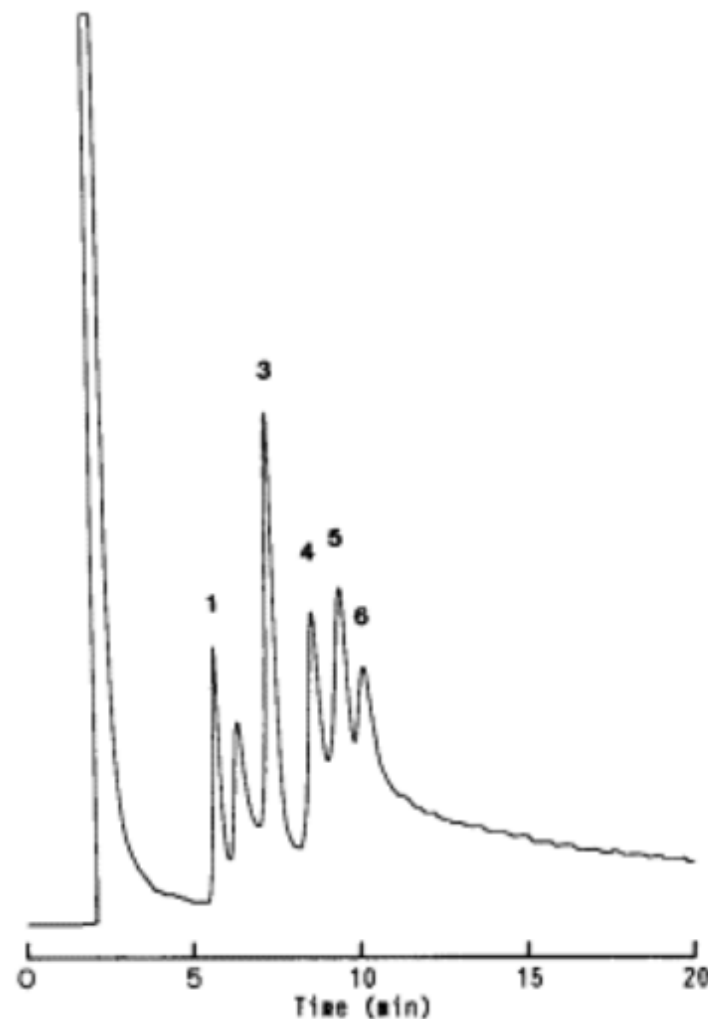
NACALAI TESQUE, INC

AP-0138

COSMOSIL Application Data

Column: 5NH₂-MS
Column size: 4.6mm I.D.-150mm
Mobile phase: Acetonitrile/ H₂O = 80/20
Flow rate: 1.0 ml/min
Temperature: 30°C
Detection: RI, Range 4×10^{-5} RIU/F.S.

Sample: 1; *D*-(+)-Xylose (100 μg)
2; *D*-(-)-Arabinose (300 μg)
3; *D*-(-)-Fructose (50 μg)
4; *D*-(+)-Mannose (300 μg)
5; *D*-(+)-Glucose (50 μg)
6; *D*-(+)-Galactose (300 μg)



NACALAI TESQUE, INC

AP-0137