

# COSMOSIL Application Data

Column: HIC  
Column size: 4.6mm I.D. - 50mm  
Mobile phase: A: 20mmol/l Phosphate Buffer  
+ 100mmol/l Na<sub>2</sub>SO<sub>4</sub>  
+ 2mol/l (NH<sub>4</sub>)<sub>2</sub>SO<sub>4</sub> (pH 6.7)  
B: 20mmol/l Phosphate Buffer  
+ 100mmol/l Na<sub>2</sub>SO<sub>4</sub> (pH 6.7)

B conc. 0 → 100% 10min

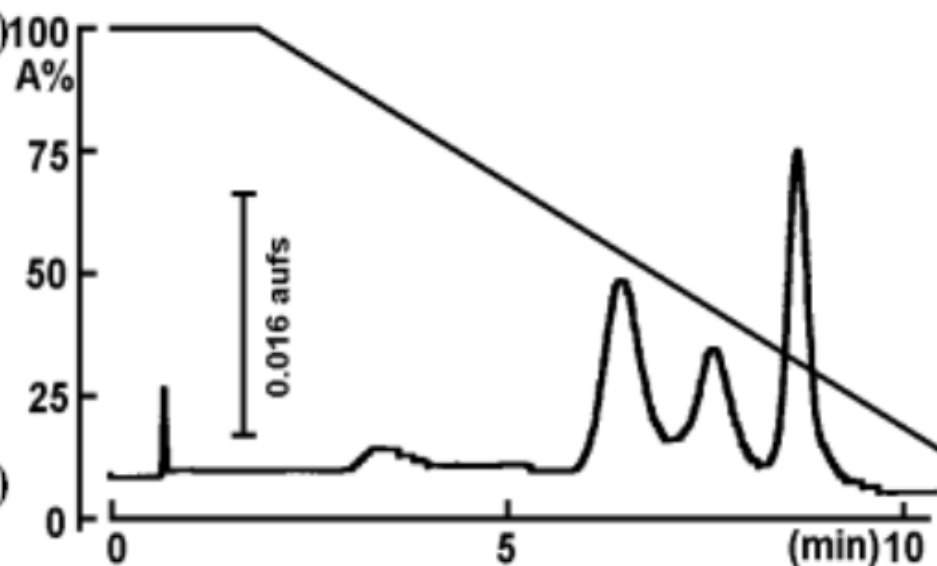
Linear gradient

Flow rate: 1.0 ml/min

Temperature: 30°C

Detection: UV 220nm

Sample:  $\beta$ -Glucosidase (15  $\mu$ g)



NACALAI TESQUE, INC

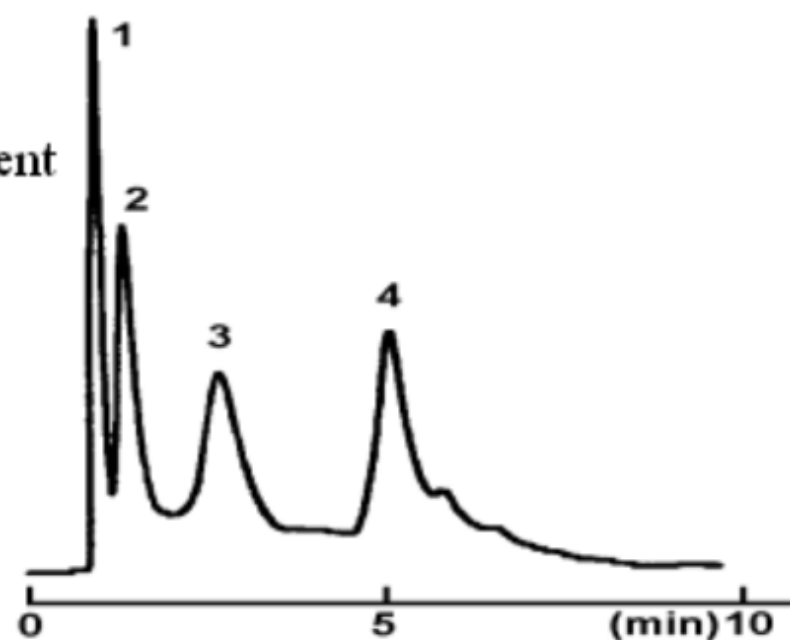
AP-0407

# COSMOSIL Application Data

Column: HIC  
Column size: 4.6mm I.D.-50mm  
Mobile phase: A:20mmol/l Phosphate Buffer  
+100mmol/l Na<sub>2</sub>SO<sub>4</sub>  
+1.5mol/l (NH<sub>4</sub>)<sub>2</sub>SO<sub>4</sub>(pH6.7)  
B:20mmol/l Phosphate Buffer  
+100mmol/l Na<sub>2</sub>SO<sub>4</sub>(pH6.7)  
B conc. 0→100% 10min Linear gradient  
Flow rate: 1.0 ml/min  
Temperature: 30°C  
Detection: UV220nm

## Sample:

1; Myoglobin	(1.0 μg)
2; β-Lactoglobulin	(2.0 μg)
3; Hemoglobin, Bovine	(5.0 μg)
4; Albumin, Bovine [BSA]	(2.0 μg)



NACALAI TESQUE, INC

AP-0406