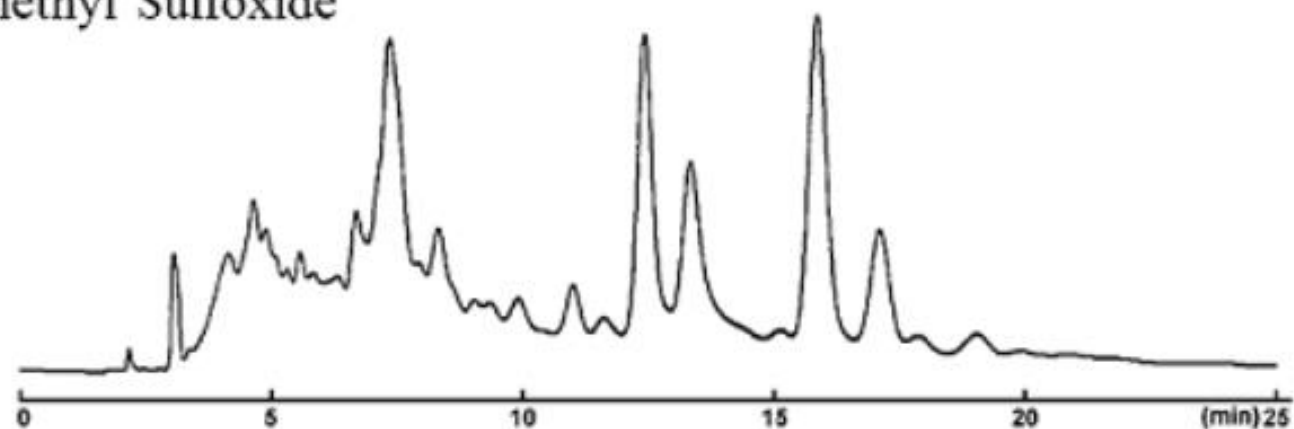


COSMOSIL Application Data

Column: Buckyprep
Column size: 4.6mm I.D.-250mm
Mobile phase: 0.1%TFA-Dimethyl Sulfoxide/ Methanol = 20/80
Flow rate: 1.0 ml/min
Temperature: 40°C
Detection: UV325nm

Sample: C60(OH)_n n=6-12 (2.0mg/ml)
Sam.Sol.: 0.1%TFA-Dimethyl Sulfoxide
Inj.Vol.: 10μl



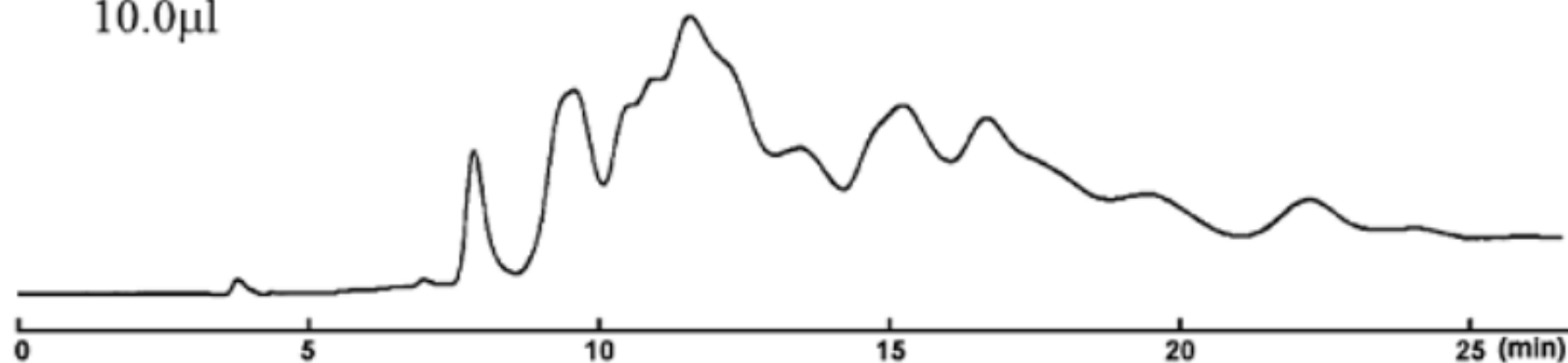
NACALAI TESQUE, INC

AP-1290

COSMOSIL Application Data

Column: Buckyprep-D
Column size: 4.6mm I.D.-250mm
Mobile phase: 2-Propanol/ Toluene = 1/99
Flow rate: 1.0 ml/min
Temperature: 30°C
Detection: UV325nm

Sample: Tris [C₆₀] PCBM
Sample conc.: 1.0mg/ml
Inj. Vol.: 10.0µl



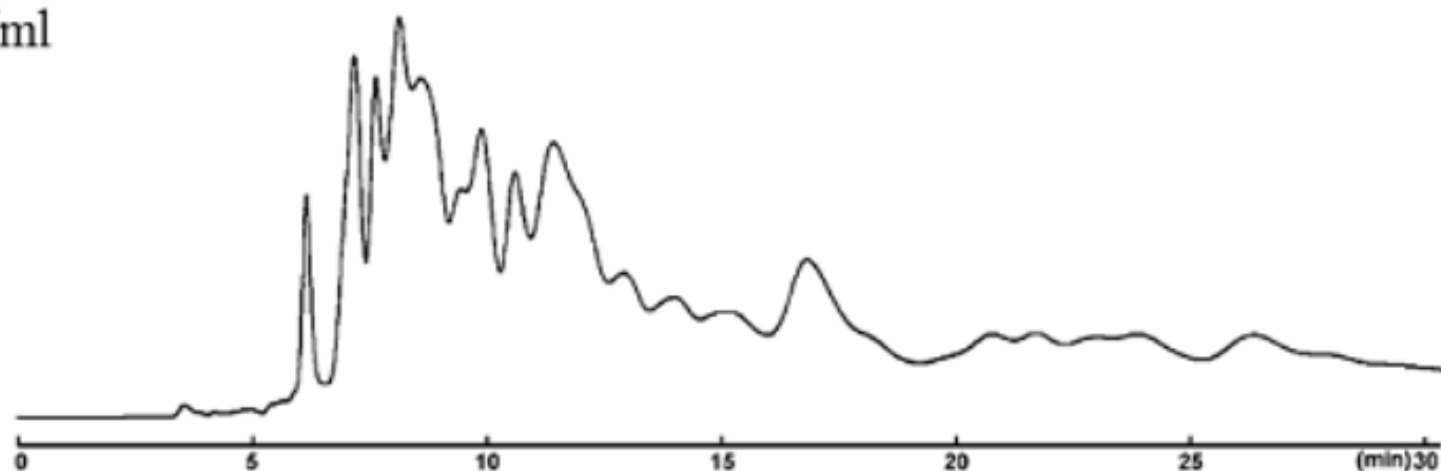
NACALAI TESQUE, INC

AP-1252

COSMOSIL Application Data

Column: Buckyprep-D
Column size: 4.6mm I.D.-250mm
Mobile phase: Methanol/ Toluene = 1/99
Flow rate: 1.0 ml/min
Temperature: 30°C
Detection: UV325nm

Sample: Tris [C₆₀] PCBM
Sample conc.: 1.0mg/ml
Inj. Vol.: 10.0µl



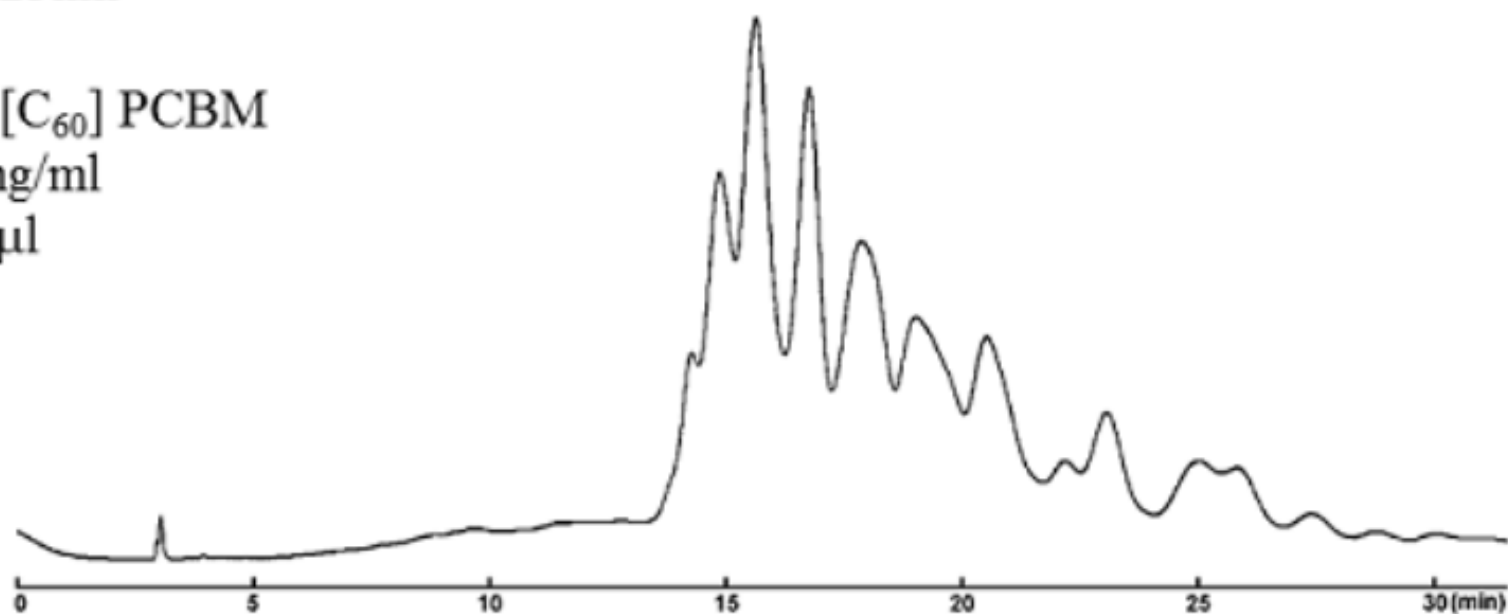
NACALAI TESQUE, INC

AP-1251

COSMOSIL Application Data

Column: Buckyprep
Column size: 4.6mm I.D.-250mm
Mobile phase: Toluene/ Methanol = 40/60
Flow rate: 1.0 ml/min
Temperature: 30°C
Detection: UV325nm

Sample: Tris [C₆₀] PCBM
Sample conc.: 1.0mg/ml
Inj. Vol.: 10.0µl



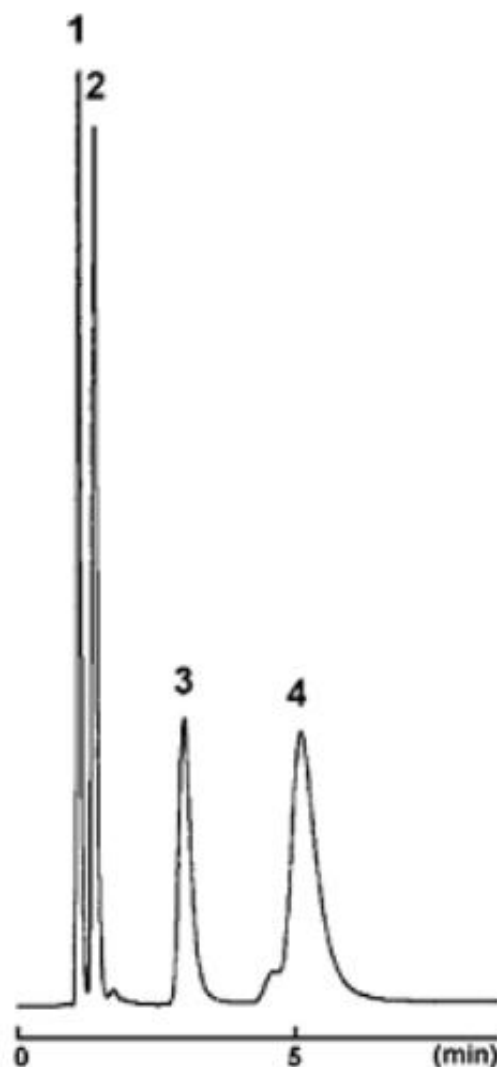
NACALAI TESQUE, INC

AP-1250

COSMOSIL Application Data

Column: Buckyprep-D
Column size: 4.6mm I.D.-50mm
Mobile phase: Toluene
Flow rate: 1.0 ml/min
Temperature: 30°C
Detection: UV325nm

Sample: 1; C₆₀ (0.125mg/ml)
2; C₇₀ (0.250mg/ml)
3; [6,6]-Phenyl-C₆₁ Butyric Acid Methyl Ester
[PCBM] (0.125mg/ml)
4; [6,6]-Phenyl-C₇₁ Butyric Acid Methyl Ester
[[70]PCBM] (0.375mg/ml)
Inj. Vol.: 1.0µl



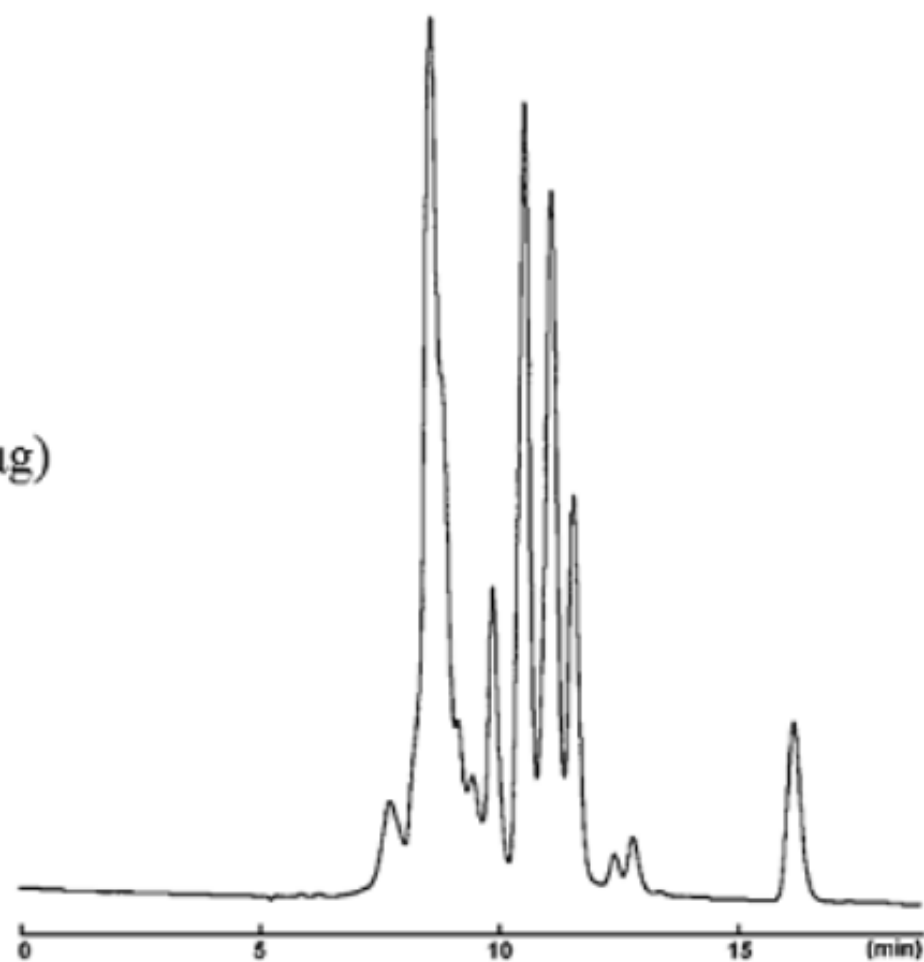
NACALAI TESQUE, INC

AP-1248

COSMOSIL Application Data

Column: Buckyprep
Column size: 4.6mm I.D.-250mm × 2
Mobile phase: Toluene/ Methanol = 80/20
Flow rate: 1.0 ml/min
Temperature: 30°C
Detection: UV325nm

Sample: C₆₀ [Indene]_n (2.0μg)



NACALAI TESQUE, INC

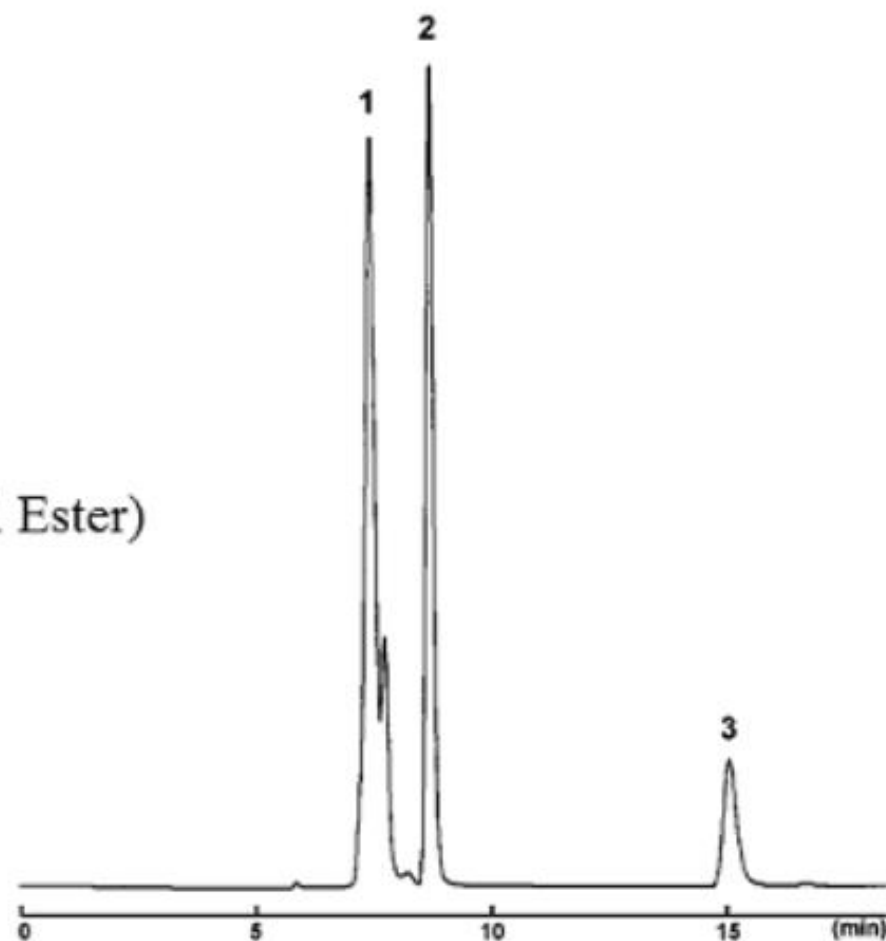
AP-1247

COSMOSIL Application Data

Column: Buckyprep
Column size: 4.6mm I.D.-250mm × 2
Mobile phase: Toluene
Flow rate: 1.0 ml/min
Temperature: 30°C
Detection: UV325nm

Sample:

- 1; [6,6]-Diphenyl-C₆₂ Bis (Butyric Acid Methyl Ester)
[Bis[60]PCBM]
- 2; [6,6]-Phenyl-C₆₁ Butyric Acid Methyl Ester
[PCBM]
- 3; C₆₀

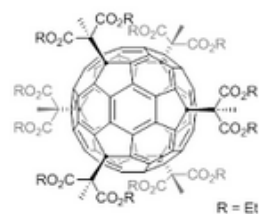


NACALAI TESQUE, INC

AP-1246

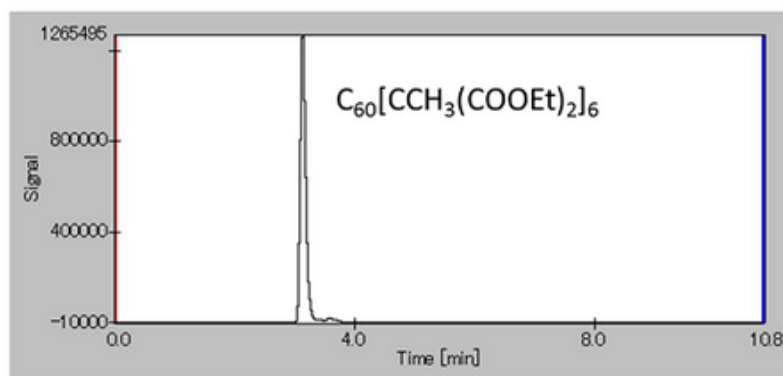
COSMOSIL Application Data

Column:
Column size: 4.6mm I.D.-250mm
Mobile phase: Toluene
Flow rate: 1.0 ml/min
Temperature: 25°C
Detection: UV 310nm
Sample: $C_{60}[CCH_3(COOEt)_2]_6$

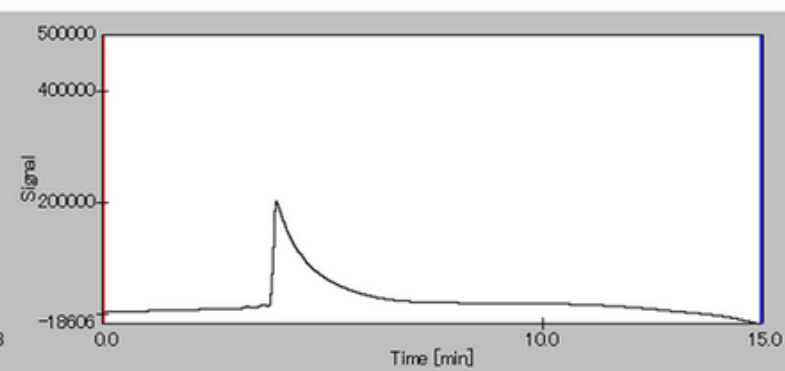


$C_{60}[CCH_3(COOEt)_2]_6$

Buckyprep



Buckyprep-D



Data courtesy of Associate Prof. Ken Kokubo
Division of Applied Chemistry, Graduate School of Engineering, Osaka University

NACALAI TESQUE, INC

AP-1243

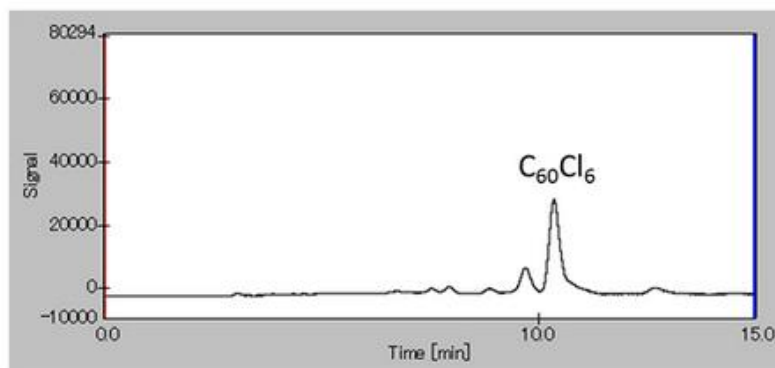
COSMOSIL Application Data

Column:
Column size: 4.6mm I.D.-250mm
Mobile phase: Toluene
Flow rate: 1.0 ml/min
Temperature: 25°C
Detection: UV 310nm

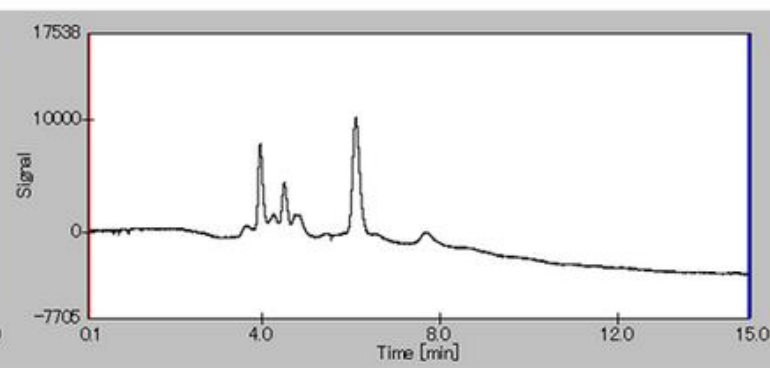
Sample: $C_{60}Cl_6$



Buckyprep



Buckyprep-D



Data courtesy of Associate Prof. Ken Kokubo
Division of Applied Chemistry, Graduate School of Engineering, Osaka University

NACALAI TESQUE, INC

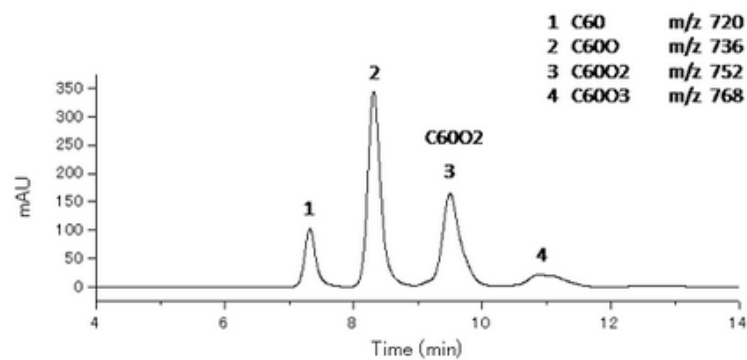
AP-1242

COSMOSIL Application Data

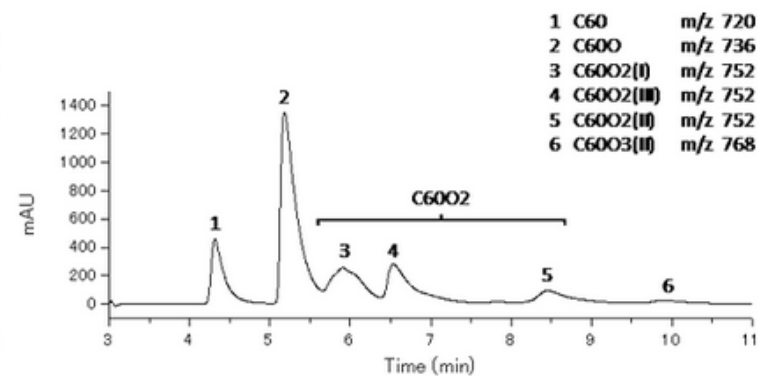
Column:
Column size: 4.6mmI.D.-250mm
Mobile phase: Toluene
Flow rate: 1.0 ml/min
Temperature: 30°C
Detection: UV 325nm

Sample: $C_{60}O_n$ (10mg/ml)
Inj. Vol.: 1.0 μ l

Buckyprep



Buckyprep-D



Data courtesy of Yusuke Tajima, Dr. Sci.
Organic Optoelectronics Laboratory, RIKEN (Institute of Physics and Chemistry)

NACALAI TESQUE, INC

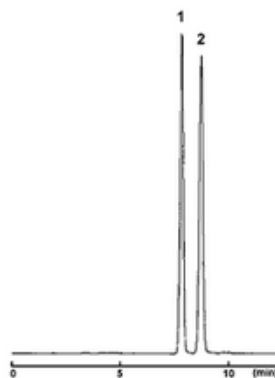
AP-1239

COSMOSIL Application Data

Column:
Column size: 4.6mm I.D.-250mm
Mobile phase: Toluene
Flow rate: 1.0 ml/min
Temperature: 30°C
Detection: UV 325nm

Sample: 1; C₆₀ (0.25mg/ml)
2; C₆₀O
Inj. Vol.: 1.0μl

Buckyprep
($\alpha=1.20$)



Buckyprep-D
($\alpha=1.79$)



NACALAI TESQUE, INC

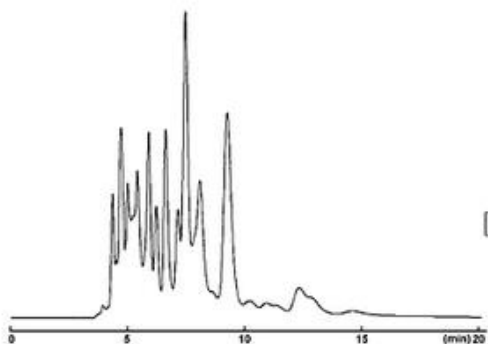
AP-1237

COSMOSIL Application Data

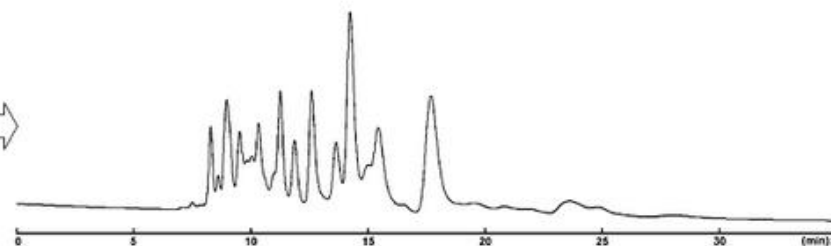
Column: Buckyprep-D
Column size:
Mobile phase: Toluene
Flow rate: 1.0 ml/min
Temperature: 30°C
Detection: UV 325nm

Sample: C₆₀ [Indene]_a (1.0mg/ml)
Inj. Vol.: 1.0μl

4.6mmI.D.-250mm



4.6mmI.D.-250mm × 2



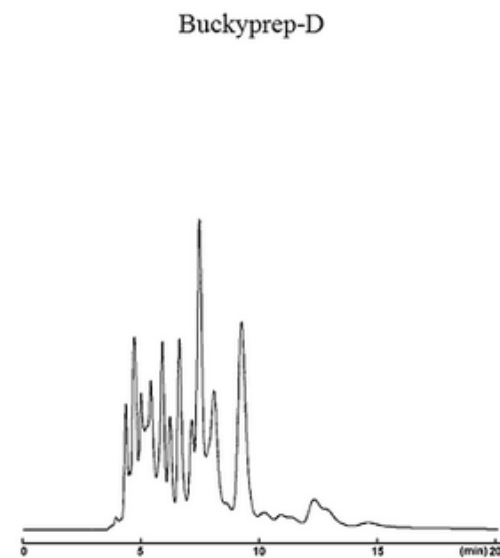
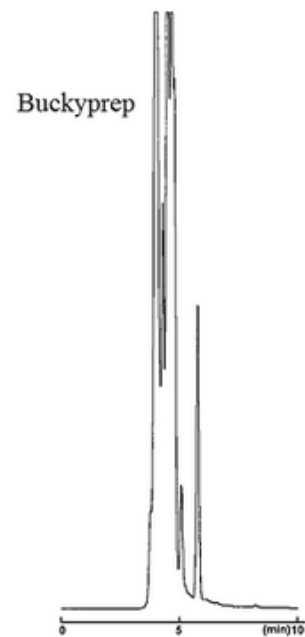
NACALAI TESQUE, INC

AP-1236

COSMOSIL Application Data

Column:
Column size: 4.6mmI.D.-250mm
Mobile phase: Toluene
Flow rate: 1.0 ml/min
Temperature: 30°C
Detection: UV 325nm

Sample: C_{60} [Indene]_n (1.0mg/ml)
Inj.Vol.: 1.0 μ l



NACALAI TESQUE, INC

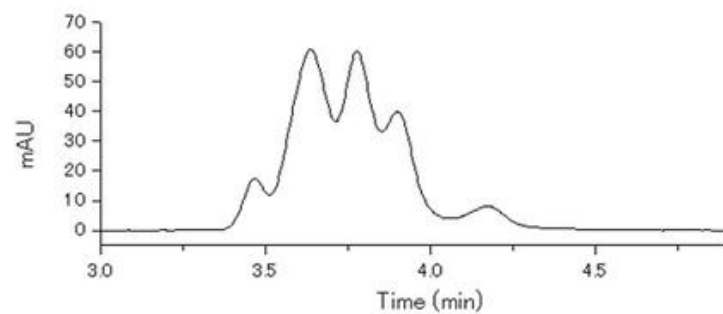
AP-1235

COSMOSIL Application Data

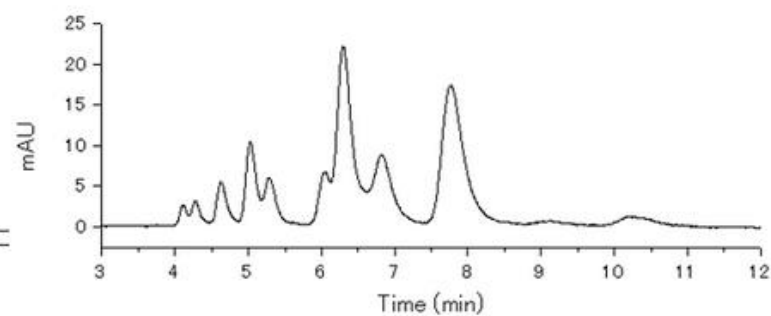
Column:
Column size: 4.6mmI.D.-250mm
Mobile phase: Toluene
Flow rate: 1.0 ml/min
Temperature: 30°C
Detection: UV 325nm

Sample: C₆₀ [Indene]₂ (1.0mg/ml)
Inj.Vol.: 1.0μl

Buckyprep



Buckyprep-D



Data courtesy of Yusuke Tajima, Dr. Sci.
Organic Optoelectronics Laboratory, RIKEN (Institute of Physics and Chemistry)

NACALAI TESQUE, INC

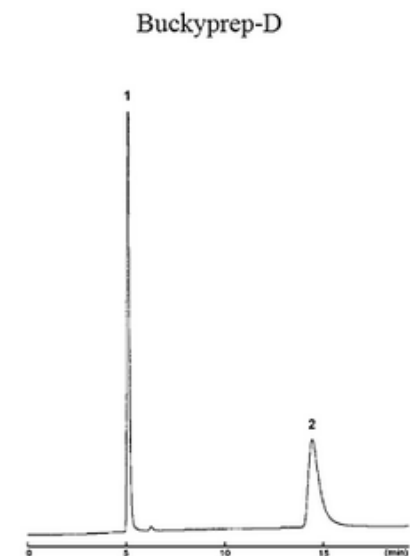
AP-1234

COSMOSIL Application Data

Column:
Column size: 4.6mm I.D.-250mm
Mobile phase: Toluene
Flow rate: 1.0 ml/min
Temperature: 30°C
Detection: UV 325nm

Sample: 1; C₆₀ (0.25mg/ml)
2; [6,6]-Phenyl-C₆₁ Butyric Acid Methyl Ester
[PCBM] (0.25mg/ml)

Inj. Vol. 1.0μl



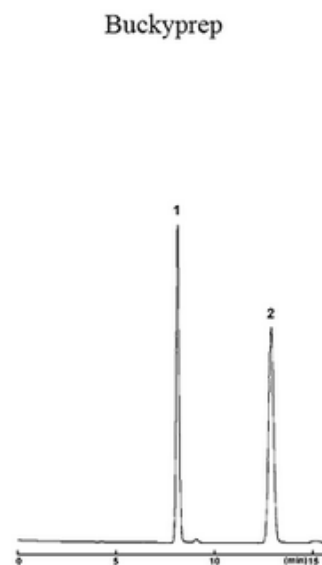
NACALAI TESQUE, INC

AP-1232

COSMOSIL Application Data

Column:
Column size: 4.6mm I.D.-250mm
Mobile phase: Toluene
Flow rate: 1.0 ml/min
Temperature: 30°C
Detection: UV 325nm

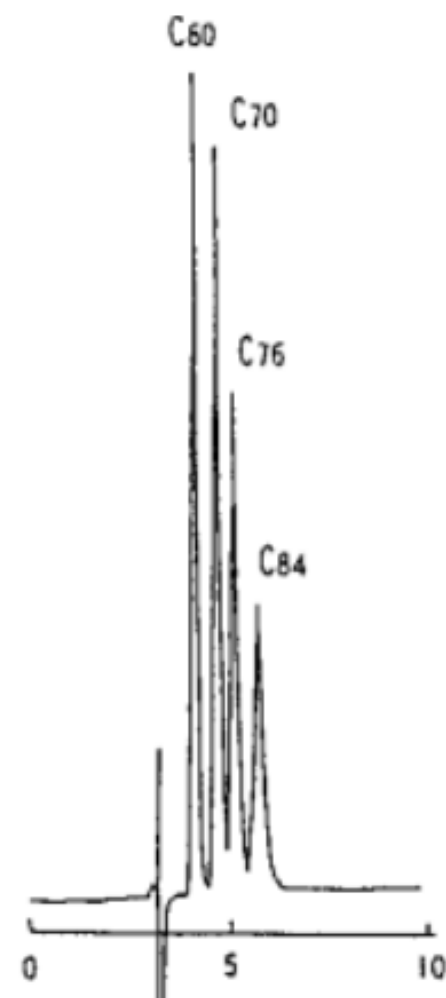
Sample: 1; C₆₀ (0.25mg/ml)
2; C₇₀ (0.50mg/ml)
Inj. Vol.: 1.0µl



COSMOSIL Application Data

Column: PBB
Column size: 4.6mm I.D.-250mm
Mobile phase: Carbon Disulfide
Flow rate: 1.0 ml/min
Temperature: 30°C
Detection: UV380nm

Sample: C₆₀
C₇₀
C₇₆
C₈₄



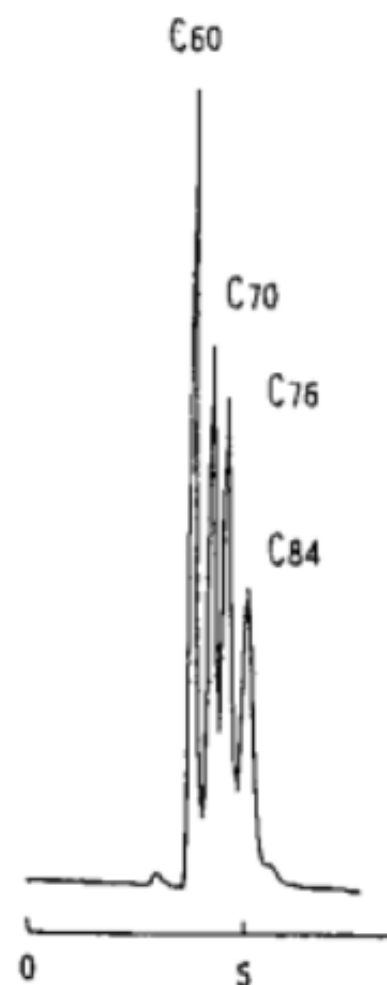
NACALAI TESQUE, INC

AP-0418

COSMOSIL Application Data

Column: PBB
Column size: 4.6mm I.D.-250mm
Mobile phase: 1,2,4-Trichlorobenzene
Flow rate: 1.0 ml/min
Temperature: 30°C
Detection: UV310nm

Sample: C₆₀
C₇₀
C₇₆
C₈₄



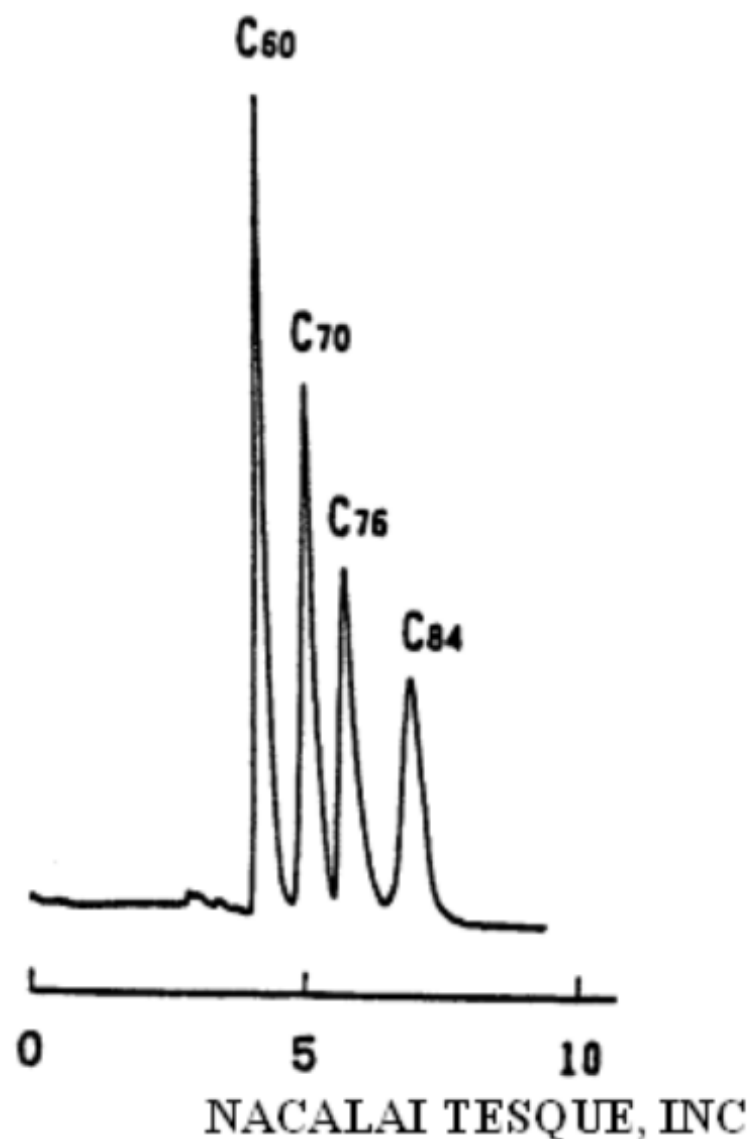
NACALAI TESQUE, INC

AP-0417

COSMOSIL Application Data

Column: PBB
Column size: 4.6mm I.D.-250mm
Mobile phase: *o*-Dichlorobenzene
Flow rate: 1.0 ml/min
Temperature: 30°C
Detection: UV310nm

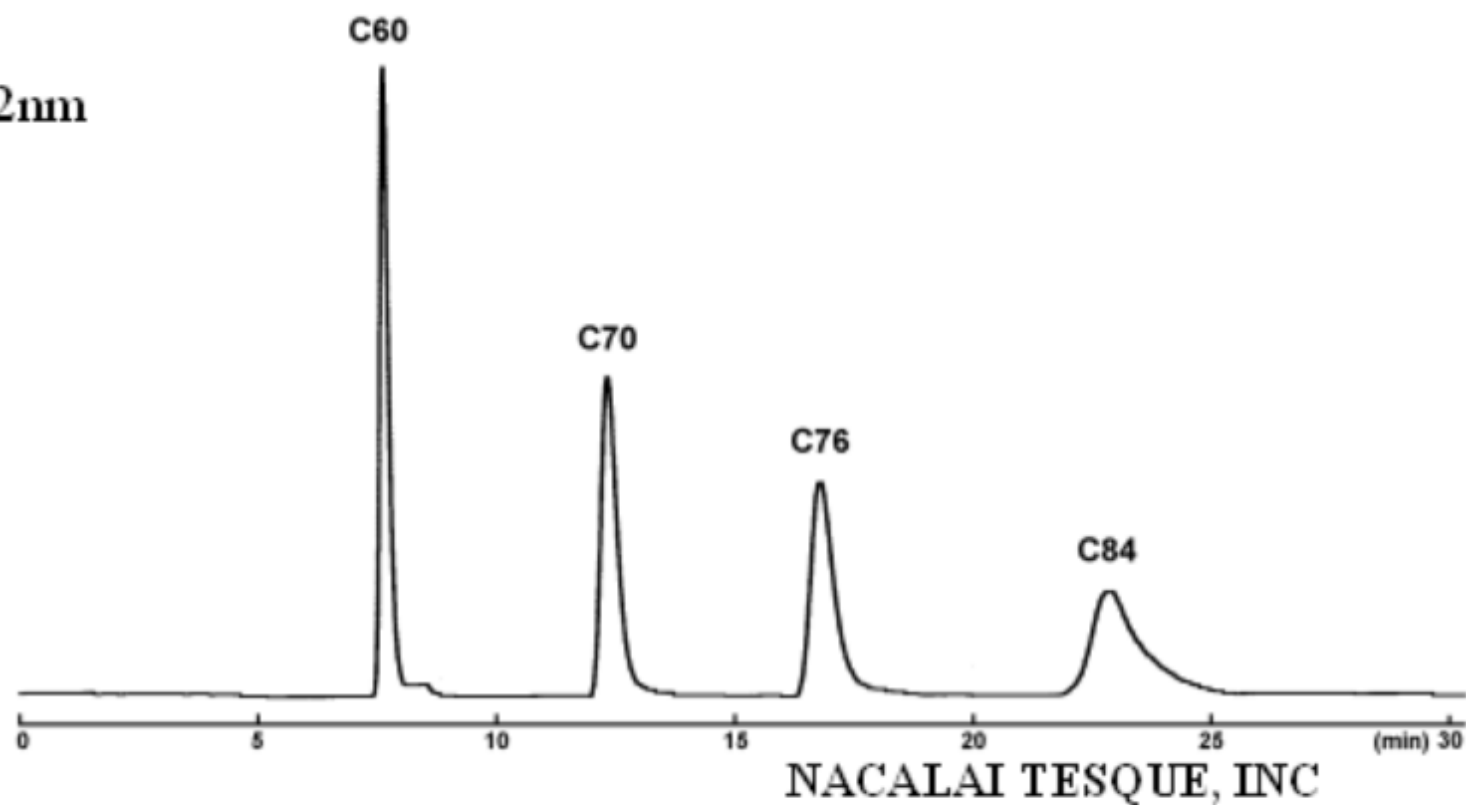
Sample: C₆₀
C₇₀
C₇₆
C₈₄



COSMOSIL Application Data

Column: Buckyprep
Column size: 4.6mm I.D.-250mm
Mobile phase: Toluene
Flow rate: 1.0 ml/min
Temperature: 30°C
Detection: UV312nm

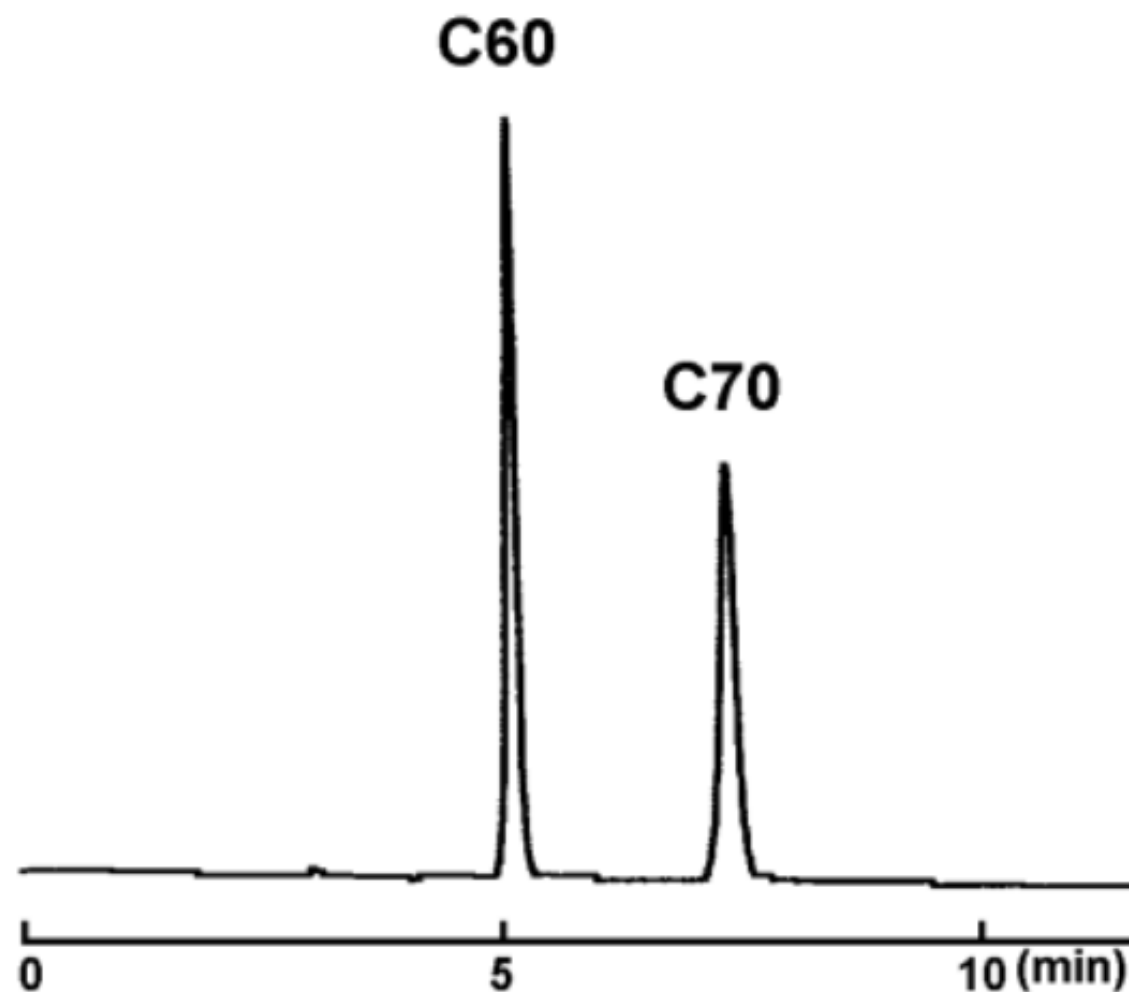
Sample: C₆₀
C₇₀
C₇₆
C₈₄



COSMOSIL Application Data

Column: 5PYE
Column size: 4.6mm I.D.-250mm
Mobile phase: Toluene
Flow rate: 1.0 ml/min
Temperature: 30°C
Detection: UV312nm

Sample: C₆₀
C₇₀



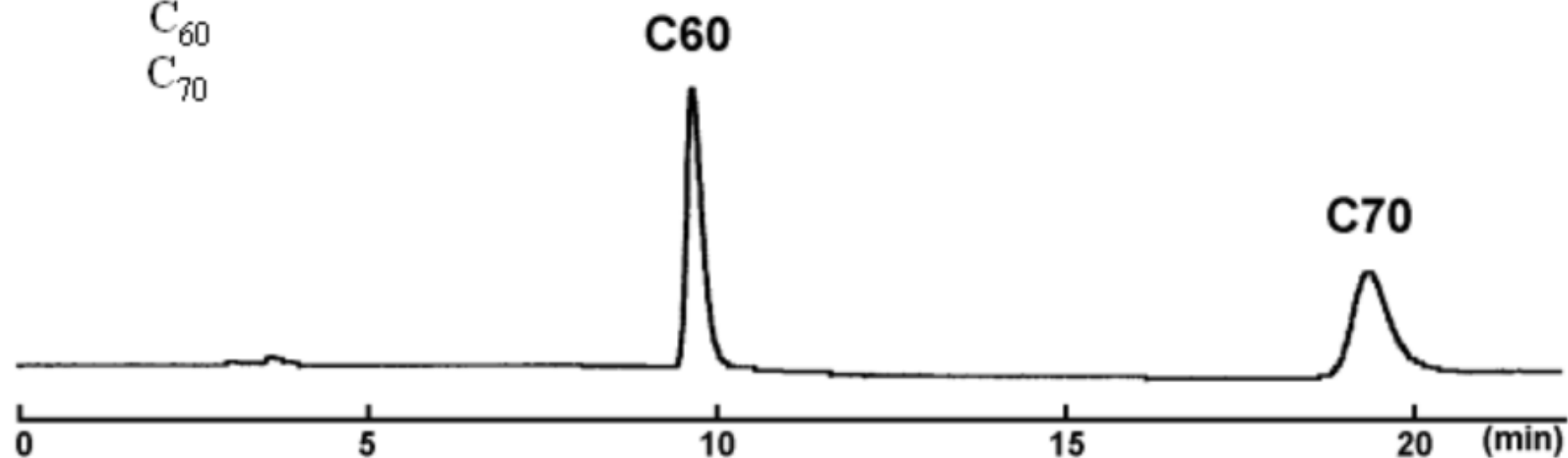
NACALAI TESQUE, INC

AP-0411

COSMOSIL Application Data

Column: PBB
Column size: 4.6mm I.D. -250mm
Mobile phase: Toluene
Flow rate: 1.0 ml/min
Temperature: 30°C
Detection: UV312nm

Sample: C₆₀
C₇₀



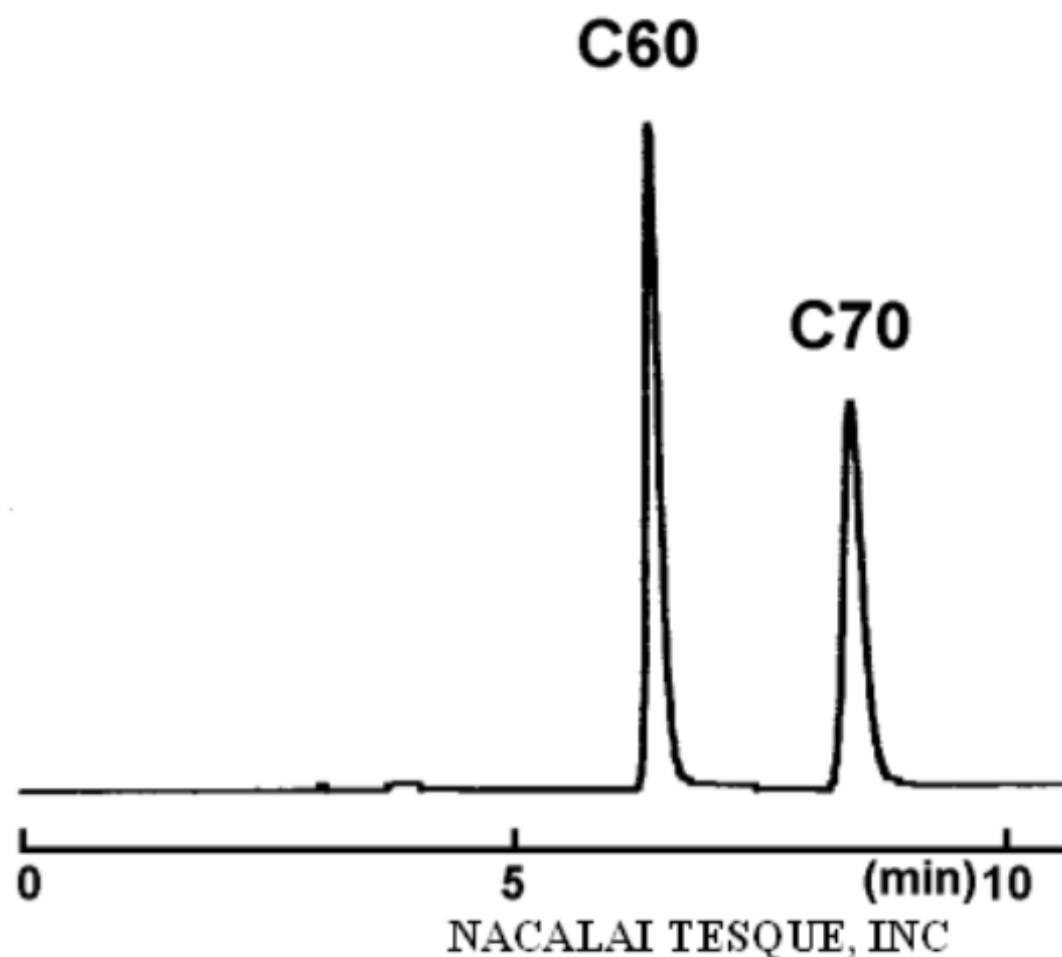
NACALAI TESQUE, INC

AP-0410

COSMOSIL Application Data

Column: Buckyprep-M
Column size: 4.6mm I.D. - 250mm
Mobile phase: Toluene
Flow rate: 1.0 ml/min
Temperature: 30°C
Detection: UV312nm

Sample: C₆₀
C₇₀

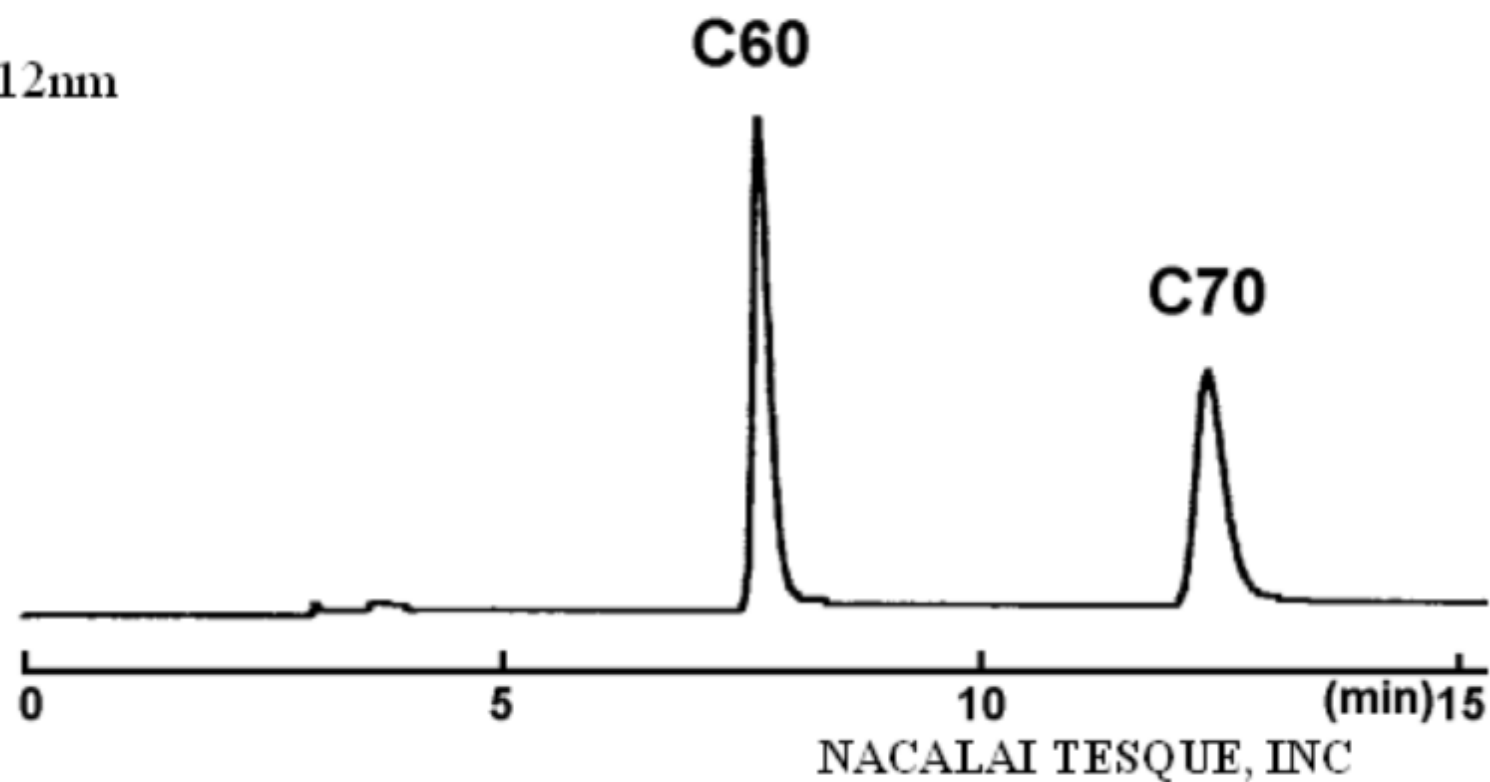


AP-0409

COSMOSIL Application Data

Column: Buckyprep
Column size: 4.6mm I.D.-250mm
Mobile phase: Toluene
Flow rate: 1.0 ml/min
Temperature: 30°C
Detection: UV312nm

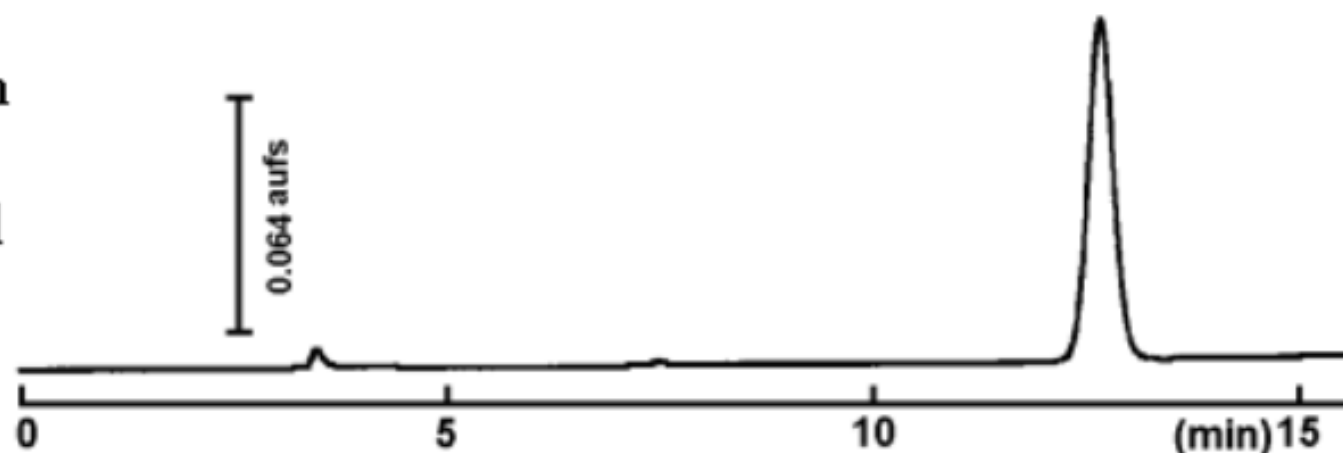
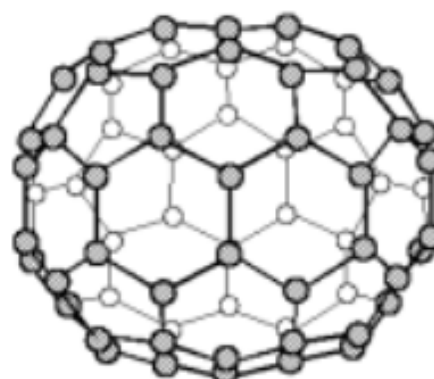
Sample: C₆₀
C₇₀



AP-0408

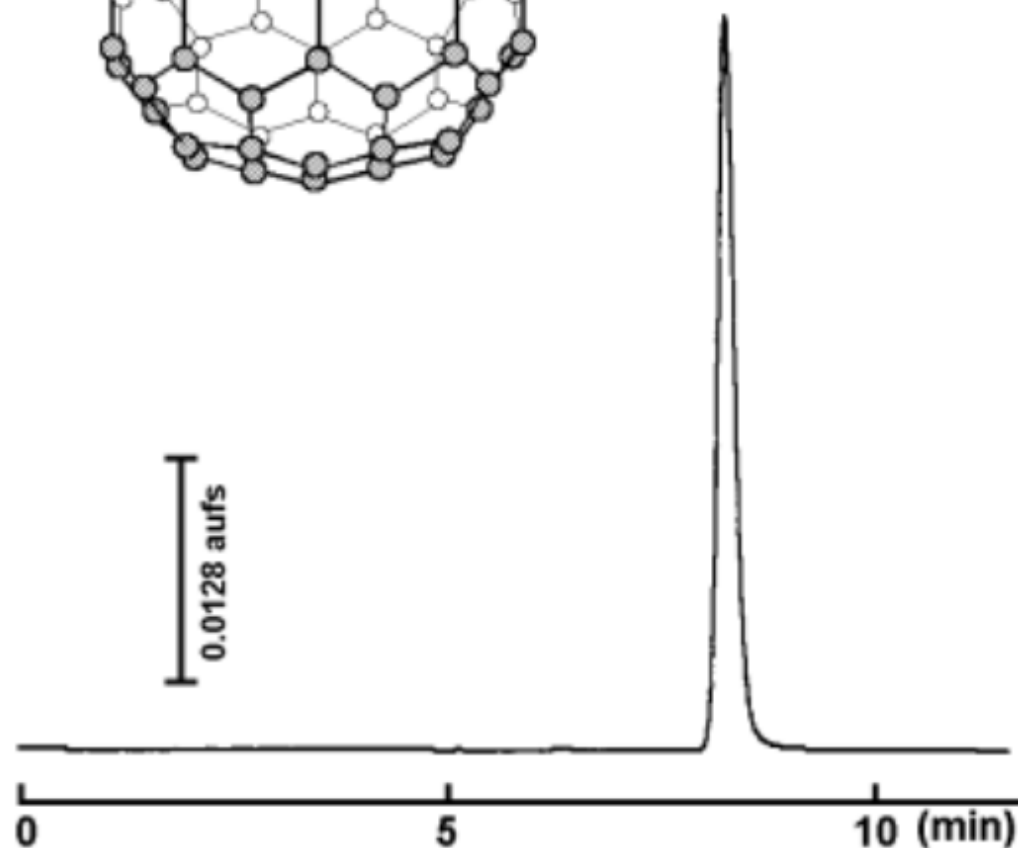
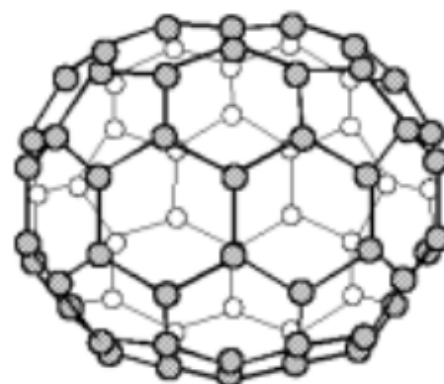
COSMOSIL Chromatogram Index

Sample: C70
CAS No.: [115383-22-7]
Molecular formula: C₇₀
Column: Buckyprep
Column size: 4.6mm I.D.-250mm
Mobile phase: toluene
Flow rate: 1.0 ml/min
Temperature: 30°C
Detection: UV 285nm
Attenuation: 0.64 aufs
Sample conc.: 0.65mg/ml
Injection volume: 1.0 μl
Retention time: 12.66 min
Capacity factor: 3.48



COSMOSIL Chromatogram Index

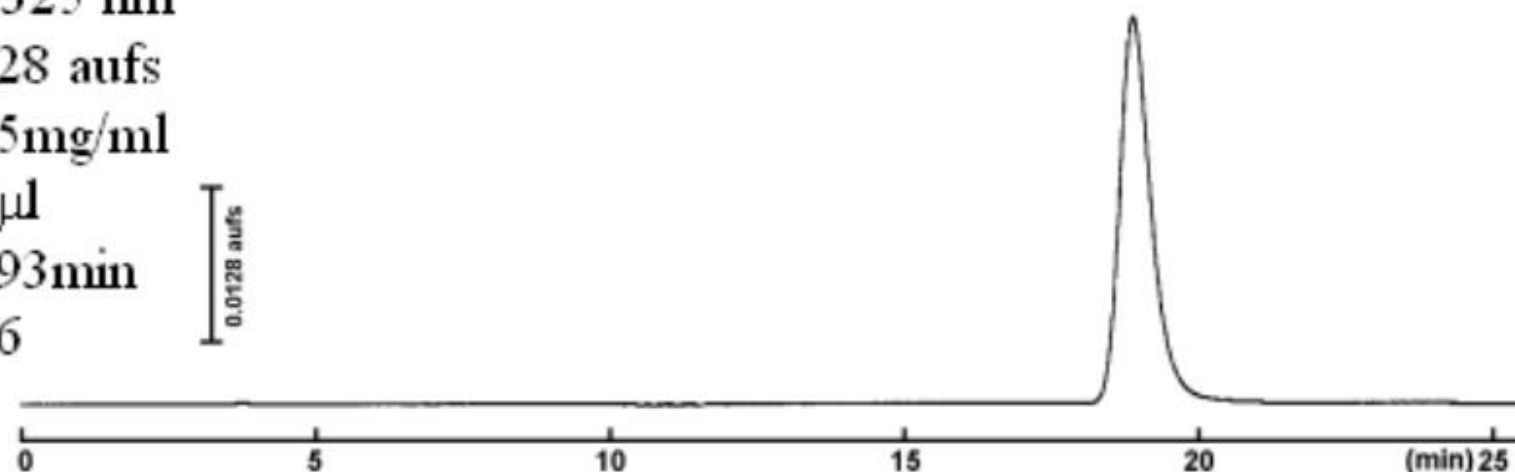
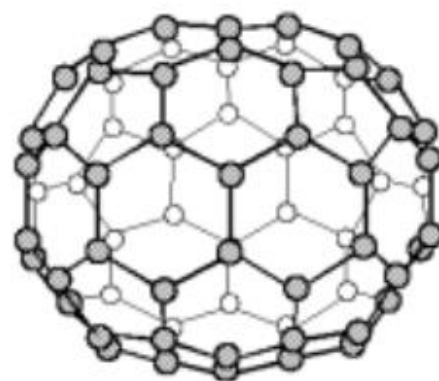
Sample: C_{70}
CAS No.: [115383-22-7]
Molecular formula: C_{70}
Column: Buckyprep-M
Column size: 4.6mm I.D.-250mm
Mobile phase: Toluene
Flow rate: 1.0 ml/min
Temperature: 30°C
Detection: UV325 nm
Attenuation: 0.128 aufs
Sample conc.: 0.25mg/ml
Injection volume: 1.0 μ l
Retention time: 8.29min
Capacity factor: 1.74



NACALAI TESQUE, INC

COSMOSIL Chromatogram Index

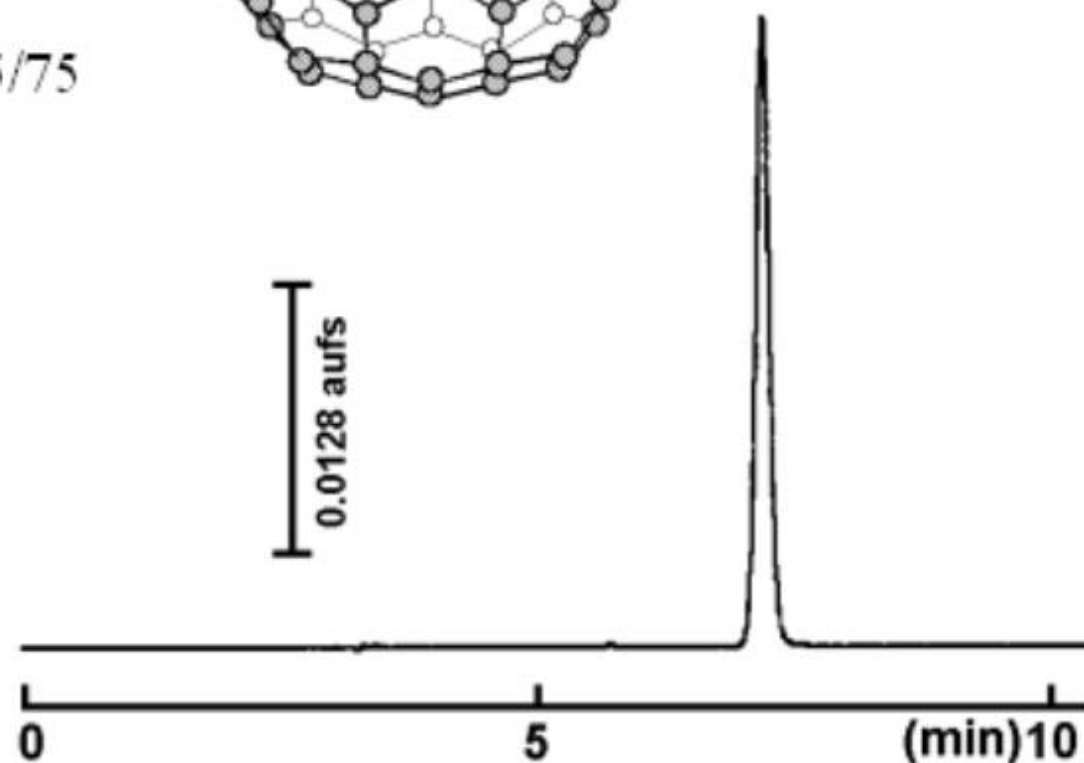
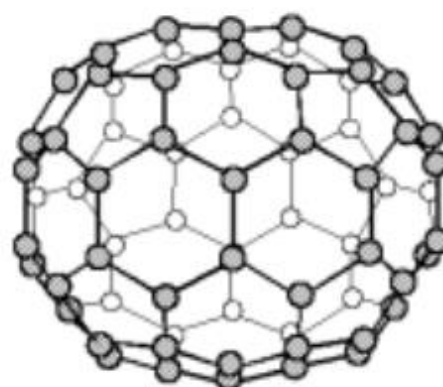
Sample: C₇₀
CAS No.: [115383-22-7]
Molecular formula: C₇₀
Column: PBB
Column size: 4.6mm I.D. - 250mm
Mobile phase: Toluene
Flow rate: 1.0 ml/min
Temperature: 30°C
Detection: UV325 nm
Attenuation: 0.128 aufs
Sample conc.: 0.25mg/ml
Injection volume: 2.0µl
Retention time: 18.93min
Capacity factor: 5.26



NACALAI TESQUE, INC

COSMOSIL Chromatogram Index

Sample: C_{70}
CAS No.: [115383-22-7]
Molecular formula: C_{70}
Column: NPE
Column size: 4.6mm I.D. -250mm
Mobile phase: Toluene/ Hexane = 25/75
Flow rate: 1.0 ml/min
Temperature: 30°C
Detection: UV325 nm
Attenuation: 0.128 aufs
Sample conc.: 0.25mg/ml
Injection volume: 0.5 μ l
Retention time: 7.22min
Capacity factor: 1.13



NACALAI TESQUE, INC