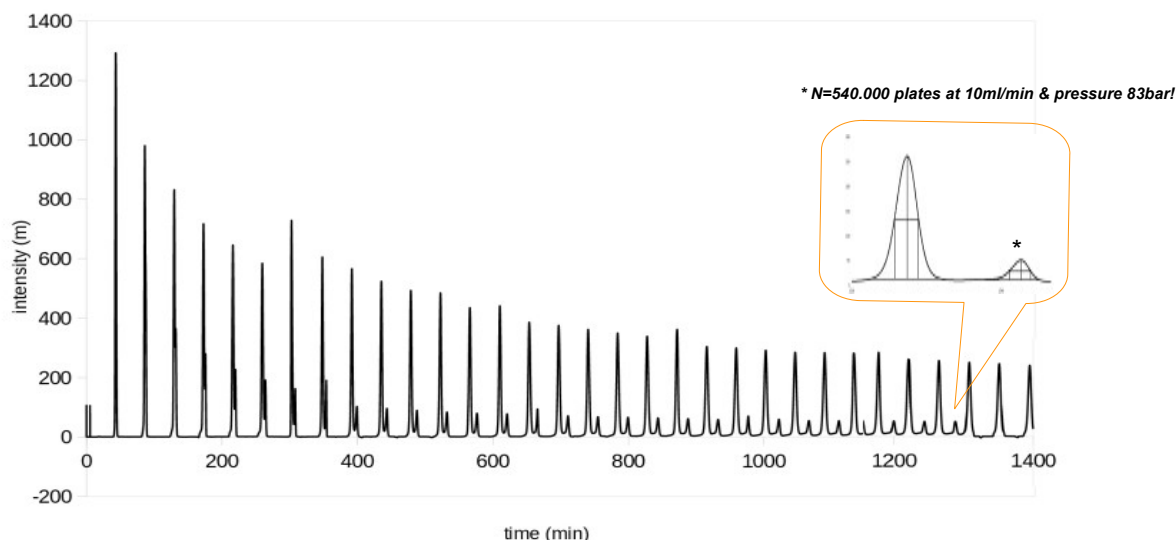


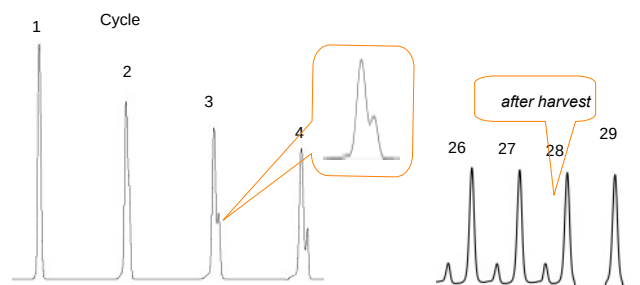
New AppliChrom GPC Columns Peak-Recycling-GPC Series

- Up to 540.000 plates/separation in liquid chromatography for highest level purity products.
- Semipreparative and preparative scale
- Low solvent consumption and savings in workforce time
- Easy and efficient to handle including service hotline and suited Peak-Recycling-GPC system
- Large range of solvent polarity



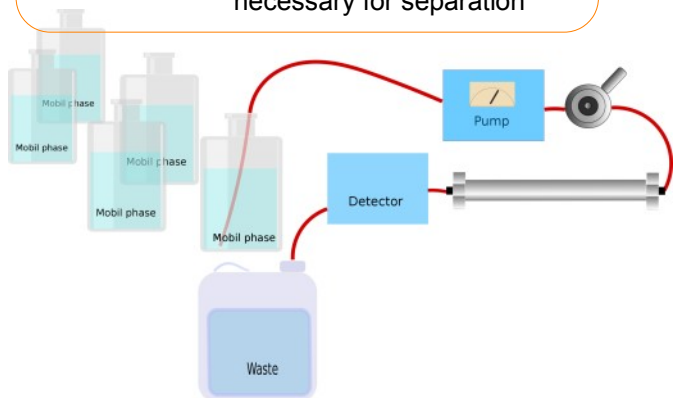
AppliChrom Peak-Recycling-GPC Series

- efficiency
- effectiveness
- maximum purity
- time savings
- low solvent consumption



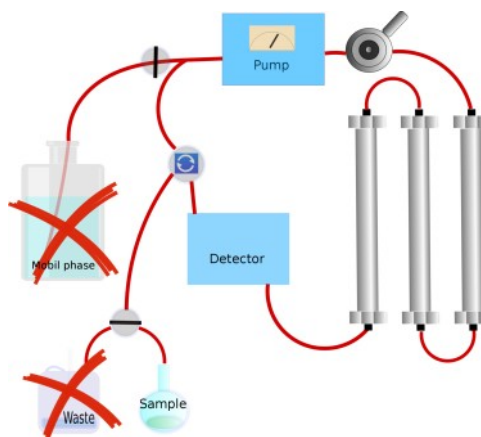
Classical manual reinjected semiprep GPC

Column length: 1x 600mm x 20mm
 Separation: ~ 30.000plates / separation
 Mobile phase: 1310min x 10ml/min
 => 13100ml = 13,1l
 necessary for separation



AppliChrom Peak-Recycling-GPC

Column length: 3x 600mm x 20mm
 Separation: ~ 540.000plates / separation
 Mobile phase: approx 50min x 10ml =
 approx 500ml
 necessary for separation



New AppliChrom GPC Columns Peak-Recycling-GPC StyDiViBe-Series

AppliChrom-Columns are easy to handle

You connect the columns with the suited Peak-Recycling-GPC system and laboratory operator let system work until needed purification result is monitored to be sufficient. In case of questions AppliChrom customers are assisted by the AppliChrom team members with more than 20 years hands on experience in liquid chromatography and GPC techniques (ask info@applichrom.de for assistance).

Solvent polarity

Polar

Non-polar

DMF/DMAc/NMP > 90/10 CHCl₃/MeOH > THF > Acetic acid ethylester > CHCl₃ > CH₂Cl₂ > Toluene^{*)}

^{*)} In case of using polar and viscous DMF/NMP/DMAc – reduction of flowrate, heating of column and in many cases some salt in solvent is necessary got get separation. Please ask for columns prepacked with final solvent that should be used.

Solvent polarity:

A big variation of solvent polarities can be used for AppliChrom Peak-Recycling-GPC columns (polystyrene based series)



Column Dimension here: 600mm x 20mm and 50mm x 20mm

Product	Exclusion Limit [Da]	Preparative Column performance ^{*)}			Precolumns ^{*)} For 20, 32 and 40mm ID columns: 50mm x 20mm
		20mm ID x	32mm ID x	40mm ID x	
AppliChrom Peak-Recycling- GPC Column					
35A	2500	> 42.000	> 42.000	> 42.000	> 35.000
100A	5.000	> 42.000	> 42.000	> 42.000	> 35.000
500A	20.000	> 42.000	> 42.000	> 42.000	> 35.000
1.000A	70.000	> 42.000	> 42.000	> 42.000	> 35.000

^{*)} Guaranteed performance in plates/meter, typical performance > 50.000/m. In recycling. More than 1 Mio plates /separation possible!

Column ID	Regular Flow rate [ml/min] ^{*)}	Max. Flow rate [ml/min] ^{*)}
20mm	10	15
32mm	20	30
40mm	30-40	40

^{*)} In case of using polar and viscous solvents like DMF/NMP/DMAc – reduction of flowrate, heating of column and in many cases some salt in solvent is necessary for a good separation. Please ask for columns prepacked with final solvent that should be used.

AppliChrom Peak-Recycling-GPC Columns

	Order No. Main Column Dimension 600mm x			Order No. Precolumn Dimension 50mm x		
	20mm ID	32mm ID	40mm ID	20mm ID	32mm ID	40mm ID
35A	CRC3560020	CRC3560032	CRC3560040	PCRC355020	PCRC355032	PCRC355020
100A	CRC10060020	CRC10060032	CRC10060040	PCRC1005020	PCRC1005032	PCRC1005040
500A	CRC50060020	CRC50060032	CRC50060040	PCRC5005020	PCRC5005032	PCRC5005040
1.000A	CRC100060020	CRC100060032	CRC100060040	PCRC10005020	PCRC10005032	PCRC10005040