

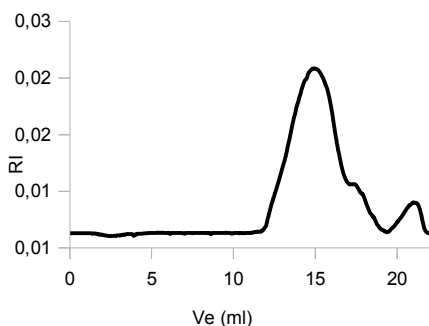
AppliChrom® ABOA CatPhil

Special GPC/SEC-columns for aqueous analysis of neutral, anionic and additional cationic polymers.

For GPC / SEC analysis of

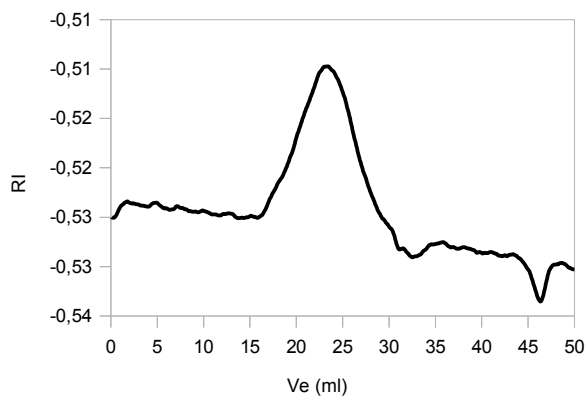
- polycations
- polyamines (chitosanes)
- polyethylenoxides
- polysaccharides
- polyanions (heparins, pectins,...)

PolyDADMAC (polydiallyldimethylammoniumchlorid, polyquaternium 6, Mw = 100-200kDa, CAS 26062-79-3)



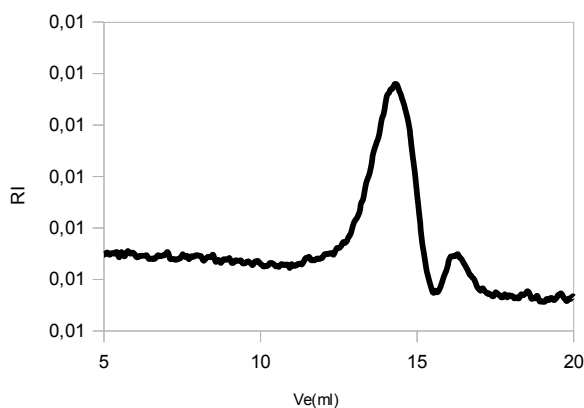
**1x AppliChrom ABOA CatPhil-P-100, 300x8mm +
1x AppliChrom ABOA CatPhil-P-350, 300x8mm,**
1ml/min 0.1M NaNO₃ + 0,2% formic acid in H₂O,
100µl sample, RI-detection.
Part. No. SACP1003008, SACP3503008

GPC-analysis of high molecular weight chitosan (Poliglusam, Polyglucosamin, CAS 9012-76-4)



3x AppliChrom ABOA CatPhil-P-400, 300x8mm
1ml/min 0.1M NaNO₃ + 0,2% foric acid in H₂O,
100µl sample, RI-detection.
Part. No. SACP1003008, SACP3503008

GPC-analysis of chitosansulfat

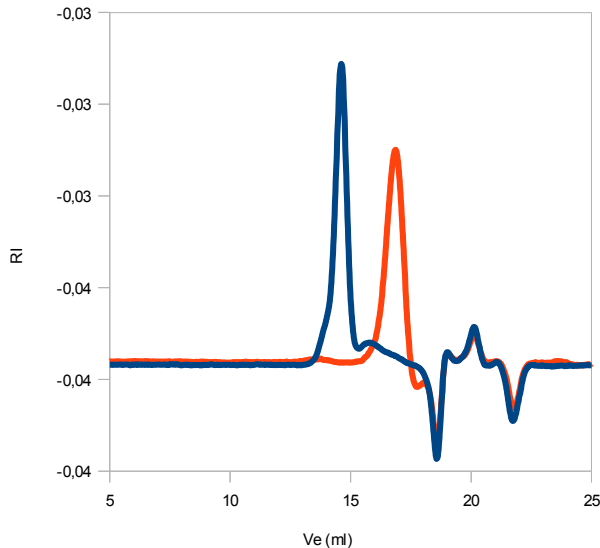


**1x AppliChrom ABOA CatPhil-P-100, 300x8mm +
1xAppliChrom ABOA CatPhil-P-350, 300x8mm,**
1ml/min 0,05MNa₂HPO₄ + 0,1M NaNO₃ in H₂O,
100µl sample, RI-detection.
Part. No. SACP1003008, SACP3503008

AppliChrom® ABOA CatPhil

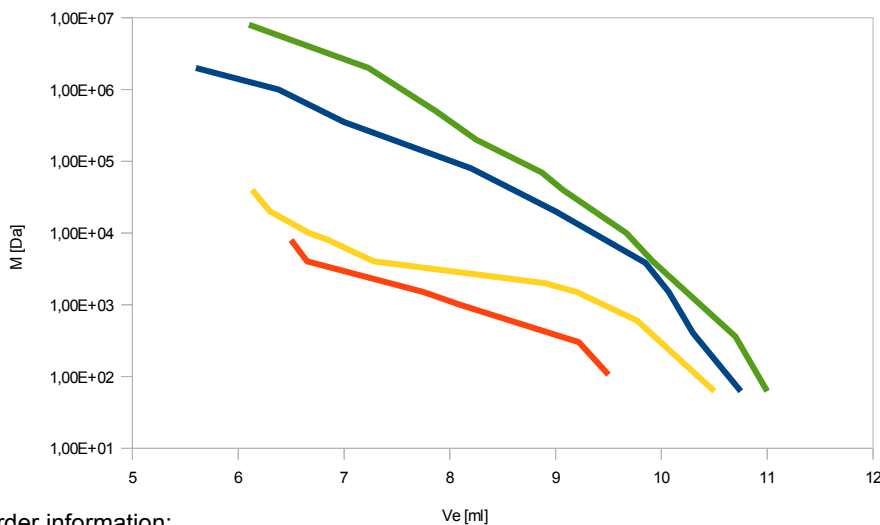
Special GPC/SEC-columns for aqueous analysis of neutral, anionic and additional cationic polymers.

PEI (Polyethylenimin) linear 150, Mn = 4x10E4, Mw = 4,2x10E4, Mp = 3,9x10E4Da;
PIE (Polyethylenimin) linear 25, Mn=2,1x10E3, MP = 2,15x10E3, Mw = 2,9x10E3 Dalton



1x AppliChrom ABOA CatPhil-P-100, 300x8mm +
1xAppliChrom ABOA CatPhil-P-350, 300x8mm,
1ml/min 0.1M NaCl + 0,1% TFA in H2O,
100µl sample, RI-detection.
Part. No. SACP1003008, SACP3503008

Calibrationcurves porosities P-100, P-200, P-350 und P400, PEO and dextrans



AppliChrom ABOA CatPhil
(300x8mm), H2O, 1ml/min

Order information:

SACP1003008	HPLC-Column AppliChrom ABOA CatPhil-P-100, separation range 100-2.500 Da, 300mm x 8mm	Price available upon request
SACP2003008	HPLC-Column AppliChrom ABOA CatPhil-P-200, separation range 100-20.000 Da, 300mmx8mm	Price available upon request
SACP3503008	HPLC-Column AppliChrom ABOA CatPhil-P-350, separation range 2,5kDa-1Mio Da, 300mmx8mm	Price available upon request
SACP4003008	HPLC-Column AppliChrom ABOA CatPhil-P-400, separation range 10kDa-5.000kDa, 300mmx8mm	Price available upon request

Further AppliChrom, Application & Chromatography products:

AppliChrom ABOA SuperOH-P, series for aqueous GPC/SEC-analysis (heparin, neutral and anionic polysaccharides, polyethylenoxides,...)

AppliChrom ABOA DMSO-Phil-P, series for GPC analysis in DMSO (starch, lignins, UF/MUF-resin,...)

AppliChrom ABOA ProteSep-S, series for aqueous SEC separation of proteins (BSA, immunoglobulins, ...)

AppliChrom ABOA SugarSep-H/Na/Ca, series for HPLC-analysis of sugars, alcohols, acids, ...

AppliChrom OTU series (C8, C18, phenyl, HILIC), for highresolution standard separations

AppliChrom SPE-catridges (C8, C18) for sample pretreatment

AppliChrom SaloEx P, SaloEx DNA, for separation of DNA and/or Proteins from buffers and low molecular weight substances in bioprocess technology

A guarantee for functionality with all analytes can not be given. For individual case please do not hesitate contacting our product specialist. For your service there is also a HPLC-application laboratory at AppliChrom in Oranienburg – please contact us. Errors and changes reserved. Products for research and development. Not tested for clinical, diagnostic or food applications. Version 10/2015.