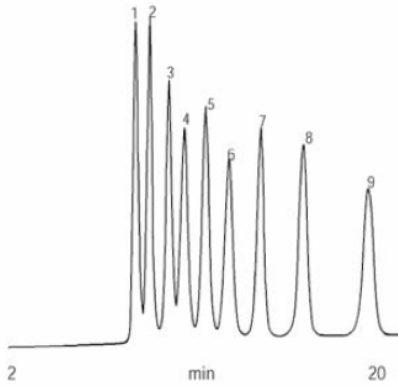


Sugars & Sugar Alcohols

Column: MetaCarb 87C, 300 x 7.8mm
Order No.: A5200
Eluent: Distilled H₂O
Flow: 0.6 ml/min
Detection: RI
Temp: 85°C

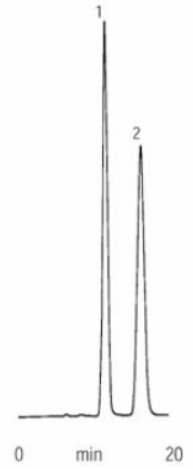
- Sample:**
1. raffinose
 2. sucrose
 3. lactulose
 4. glucose
 5. galactose
 6. fructose
 7. ribitol
 8. mannitol
 9. sorbitol



USP L-19 Carbohydrates

Column: MetaCarb USP, 250 x 4.0mm
Order No.: A5092
Eluent: Distilled H₂O
Flow: 0.2 ml/min
Detection: RI
Temp: 30°C

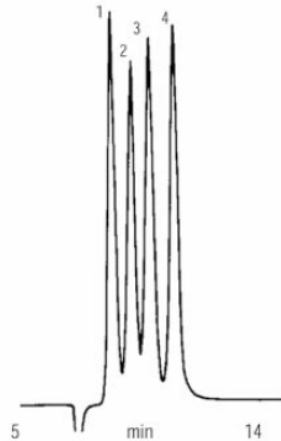
- Sample:**
1. mannitol
 2. sorbitol



Citric Acid and Sugars

Column: MetaCarb 87H, 300 x 7.8mm
Order No.: A5210
Eluent: 0.005N H₂SO₄
Flow: 0.5 ml/min
Detection: RI
Temp: ambient

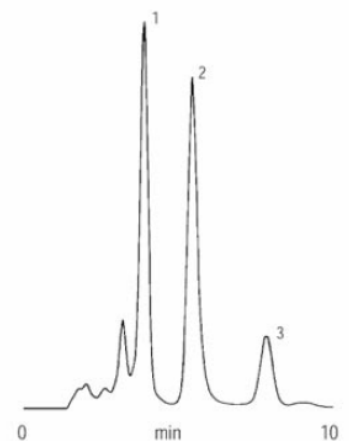
- Sample:**
1. sucrose
 2. citric acid
 3. glucose
 4. fructose



Markers in Ground Beef

Column: MetaCarb 87H, 300 x 7.8mm
Order No.: A5210
Eluent: 0.005N H₂SO₄
Flow: 1.0 ml/min
Detection: RI
Temp: 35°C

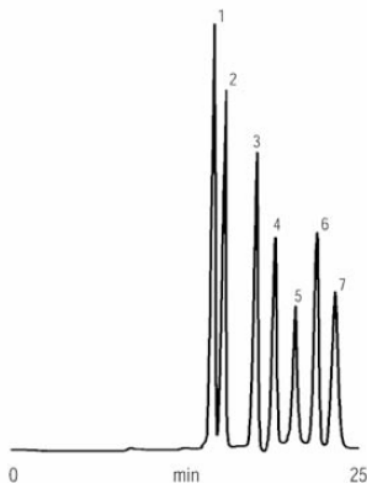
- Sample:**
1. M1
 2. M2
 3. M3



Mono and Disaccharides

Column: MetaCarb Pb Plus, 300 x 7.8mm
Order No.: A5242
Eluent: Distilled H₂O
Flow: 0.4 ml/min
Detection: RI
Temp: 80°C

- Sample:**
1. sucrose
 2. maltose
 3. glucose
 4. xylose
 5. galactose
 6. arabinose
 7. mannose



Fermentation Products

Column: MetaCarb 67C, 300 x 6.5mm
Order No.: A5236
Eluent: Distilled H₂O
Flow: 0.5 ml/min
Detection: RI
Temp: 90°C

- Sample:**
1. DP4
 2. DP3
 3. DP2
 4. ethanol

