

Eliminate Frustrating Capillary Connection Problems

Agilent gold-plated Flexible Metal ferrules



Make inert, leak-free connections between GC columns and Capillary Flow Technology (CFT) devices

Agilent
CrossLab
From Insight to Outcome

Standard and coated metal ferrules have a hard outer coating that creates installation issues, resulting in over-tightening that can cause column breakage, as well as microscratches on the ferrule and CFT device, which can lead to leaks that damage your column.

Gold-plated Flexible Metal ferrules remove these hassles—while delivering unbeatable inertness. Their flexible design allows each ferrule to gently compress around the column, preventing leaks and breakage. Their stainless-steel construction holds its shape during temperature cycling to maintain a leak-free connection and the gold coating adjusts to create a perfect fit with your CFT device on the very first installation attempt, greatly improving ease of use. Achieve better results and process more samples without unplanned downtime with:

- **Consistent seals.** Gold-plated Flexible Metal ferrules form to microscratches and provide excellent sealing capacity with tighter ID tolerances to accommodate a wide range of column tubing.
- **No retightening required.** Gold plating provides a soft surface that conforms to the contour of your CFT device, ensuring a leak-free seal without retightening or reinstallation.
- **Long-term connections at high temperatures.** Fused-silica tubing does not break after extended periods at high temperatures.
- **CFT compatibility.** Ferrules work with CFT backflush, effluent splitting, retention gap connections, GC by GC, and Deans switch.
- **The right ferrule for your application.** A range of inner diameters accommodates Agilent and non-Agilent capillary fused-silica columns, including Agilent J&W UltiMetal GC columns.



Touchless packaging prevents contamination

Agilent Flexible Metal ferrules are conveniently packaged to let you thread the column through the ferrule while it is still in the package. So you won't risk dropping or contamination while handling.

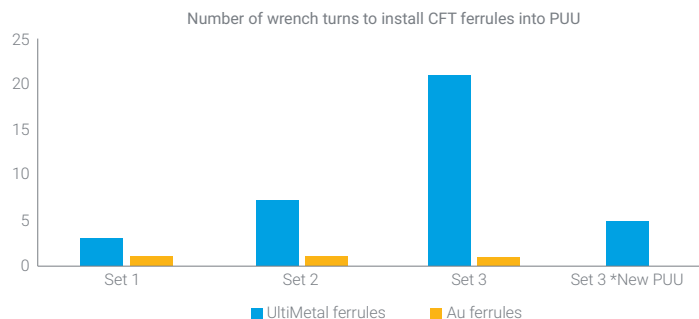
Take a closer look:
[agilent.com/chem/flexipack](https://www.agilent.com/chem/flexipack)

Combining high-level inertness with improved ease of use

With equivalent chemical performance to our UM+ ferrules, the Agilent gold-plated Flexible Metal ferrules reduce active analyte loss, increase response, and improve your results. Furthermore, this unique ferrule provides the most secure connection for CFT usage without the need for retightening and multiple leak checks. And that makes these ferrules a key part of the Agilent Inert Flow Path.

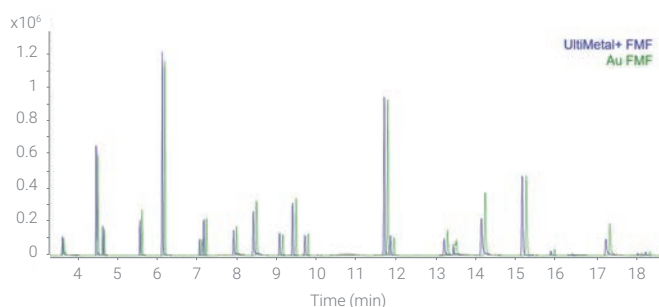
Agilent Inert Flow Path solutions ensure a reliably inert GC flow path for higher sensitivity, accuracy, and reproducibility... especially at trace levels. They include Agilent J&W Ultra Inert GC columns, Ultra Inert inlet liners, GC and GC/MS instruments, and Ultra Inert gold seals. UltiMetal Plus Flexible Metal ferrules for inlet and detector fittings are also available.

Installation attempts required for a leak-free seal



*Column broke after 20 additional small wrench turns and therefore a new purged ultimate union (PUU) had to be installed.

Chemical performance of a 100 ng/mL pesticides mixture



Agilent gold-plated Flexible Metal ferrules: Easy installation with no leaks and no activity, every time

Description	Unit	Part Number
Gold-plated Flexible Metal ferrule with 0.4 mm id For fused silica tubing 0.1-0.25 mm id	10/pk	G2855-28501
Gold-plated Flexible Metal ferrule with 0.5 mm id For fused silica tubing 0.32 mm id	10/pk	G2855-28502
Gold-plated Flexible Metal ferrule with 0.8 mm id For fused silica tubing 0.45 - 0.53 mm id	10/pk	G2855-28503
Gold-plated Flexible Metal ferrule Use with 0.25 and 0.32 mm UltiMetal column tubing	10/pk	G2855-28505
Gold-plated Flexible Metal ferrule Use with 0.53 mm UltiMetal column tubing	10/pk	G2855-28506



Each part number is uniquely designed to prevent inventory mix-ups and help you find the ferrule you need quickly.

To learn more about preswaging, trimming, and quality inspection, watch our column connections video at [agilent.com/chem/flexipreswag](https://www.agilent.com/chem/flexipreswag)

To learn more about Agilent Inert Flow Path solutions, visit [agilent.com/chem/inert](https://www.agilent.com/chem/inert)

DE.3736111111

This information is subject to change without notice.

© Agilent Technologies, Inc. 2020
Published in the USA, December 1, 2020
5991-2033EN